

# RIGHT ANGLE gear drives



**Turn Corners. No Drips.  
Worry Free. Cool.**

*Slide keyed shafting through the bores and take a right turn for the better!*

*W.C. Branham Inc. Right Angle Gear Drives are vast improvements over "float-style" or "slide-style" models made from other companies. All of our gear drives use heavy duty sealed ball bearings that support both thrust and radial loads which eliminate the need for an inner bearing race in competitor's roller bearing models.*

*Our sealed gearcases and bearings prevents lubricant leakage ending the need for, yes, drip pans. Fewer parts and cooler operating temperatures offer better performance and improves efficiency.*

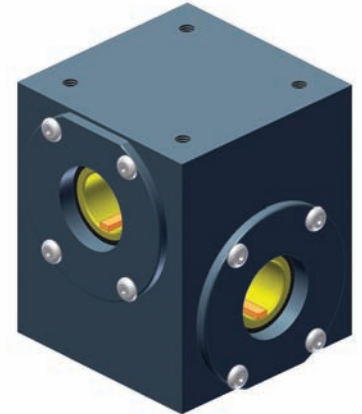
## standard features

Bi-Directional | Right and Left Hand rotation | Heavy duty sealed ball bearings | Sealed gear case | Pre-Lubricated with MagnaLube®-G Grade H2

### ADD-A-SHAFT® MINI

Compact 1 inch shaft centers

- 1:1 gear ratio
- Speeds to 1800 RPM
- Maximum hand torque, 132 in. lbs.
- Accepts 5/8" and 1/2" keyed shaft diameter combinations
- 1045 heat treated 45° helical gears
- Machined aluminum construction, hardcoated
- Optional foot mount
- 2.87 in. tall x 2.5 in. wide
- Search: [AAS Mini](#)

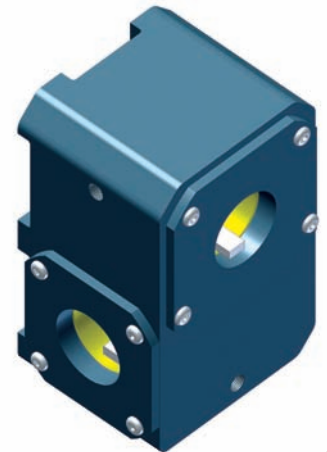


AAS Mini

### ADD-A-SHAFT®

1.0, 1.25, 1.5 inch bore combinations

- 2 1/2 inch shaft centers (1:1, 3:2 Ratios)
- 2 1/4 inch shaft centers (2:1 Ratio)
- Speeds to 1200 RPM
- Maximum hand torque, 609 in. lbs.
- 8620 heat treated 45° helical gears
- Cast aluminum construction, hardcoated
- Base mount types with integrated mounting foot print
- Search: [AAS 1:1](#), [AAS 3:2](#), [AAS 2:1](#), [AAS BM](#)



AAS BM

### INSERT-A-SHAFT®

5/8, 3/4, 1, 1 1/4 inch bore combinations

- Integrated hollow bore shafting for smaller shaft diameters and greater combinations
- 2 1/2 inch shaft centers (1:1, 3:2 Ratios)
- 2 1/4 inch shaft centers (2:1 Ratio)
- Speeds to 1200 RPM
- Maximum hand torque, 609 in. lbs.
- 8620 heat treated 45° helical gears
- Cast aluminum construction, hardcoated
- Base mount types with integrated mounting foot print
- Search: [IAS 1:1](#), [IAS 3:2](#), [IAS 2:1](#), [IAS BM](#)



IAS BM

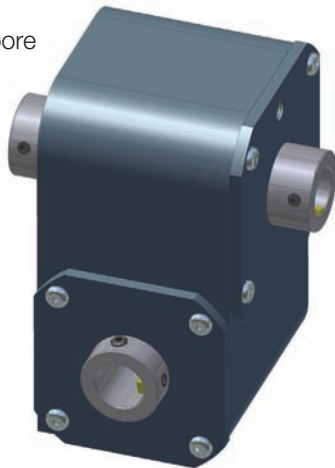
RIGHT ANGLE  
gear drives

# RIGHT ANGLE gear drives

## INSERT-A-SHAFT® EXTENDED SHAFT

Added shafting support

- Integrated extended hollow bore shafting for smaller shaft diameters
- 2 1/2 inch shaft centers (1:1, 3:2 Ratios)
- 2 1/4 inch shaft centers (2:1 Ratio)
- Speeds to 1200 RPM
- Maximum hand torque, 402 in. lbs.
- 8620 heat treated 45° helical gears
- Cast aluminum construction, hardcoated
- Search: **IAS-ES 1:1, IAS-ES 3:2, IAS-ES 2:1**

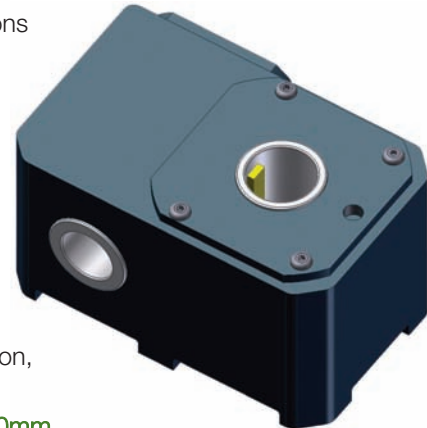


IAS-ES

## INSERT-A-SHAFT® METRIC

20, 25, 30mm bore diameters

- Choice of standard or base mounting
- Metric mounting dimensions
- Metric shaft keys
- 2 1/2 inch shaft centers (1:1, 3:2 Ratios)
- Speeds to 1200 RPM
- Maximum hand torque, 402 in. lbs.
- 8620 heat treated 45° helical gears
- Cast aluminum construction, hardcoated
- Search: **20mm, 25mm, 30mm**

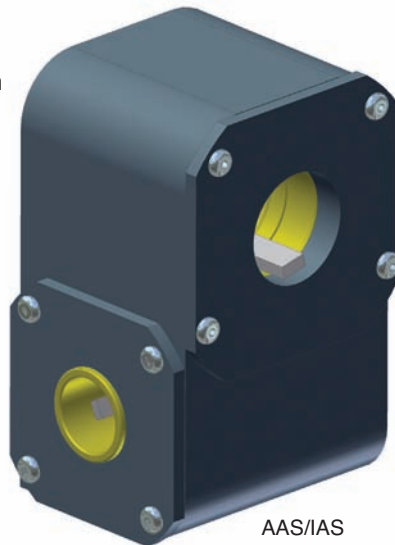


IAS Metric

## ADD-SHAFT® / INSERT-A-SHAFT®

Greater bore diameter choices

- Combines both popular models for widest selection
- 'A' Bore - 1.0, 1.25, 1.5 inch diameters
- 'B' Bore - 5/8, 3/4, 1 inch diameters
- 2 1/2 inch shaft centers (1:1, 3:2 Ratios)
- 2 1/4 inch shaft centers (2:1 Ratio)
- Speeds to 1200 RPM
- Maximum hand torque, 402 in. lbs.
- 8620 heat treated 45° helical gears
- Cast aluminum construction, hardcoated
- Search: **AAS/IAS 1:1, AAS/IAS 3:2, AAS/IAS 2:1**



AAS/IAS

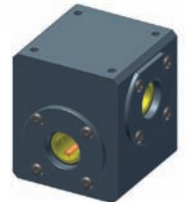
## NEW GLIDE RIGHT™

Direct mounting interchangeable drives

- T-O-M S-Rite Interchangeable
- Compact Mini 1:1 Ratio on 1 inch shaft centers
- Compact Mini accepts 5/8" and 1/2" keyed shaft diameter combinations
- Standard 1:1 and 3:2 Ratios on 2 1/2 inch shaft centers
- Standard 2:1 Ratios on 2 1/4 inch shaft centers
- Standard accepts 3/4, 1, 1 1/4, 1 1/2 inch keyed shaft diameter combinations
- (8) R10 Double Sealed Ball Bearings, Compact Mini Models
- H.D. R24 & R20 Double Sealed Ball Bearings, Standard Models
- Compact mini maximum hand torque, 264 in. lbs.
- Standard maximum hand torque, 609 in. lbs.
- Lube & breather ports with fittings
- Search: **Glide Right**



Glide Right



Glide Right Mini

## standard features

Bi-Directional | Right and Left Hand Rotation | Heavy Duty Sealed Ball Bearings | Sealed Gear Case | Pre-Lubricated with MagnaLube-G Grade H2

# RIGHT ANGLE gear drives

## NEW CRL™ GEAR DRIVES

Continuous Recirculating Lubricant

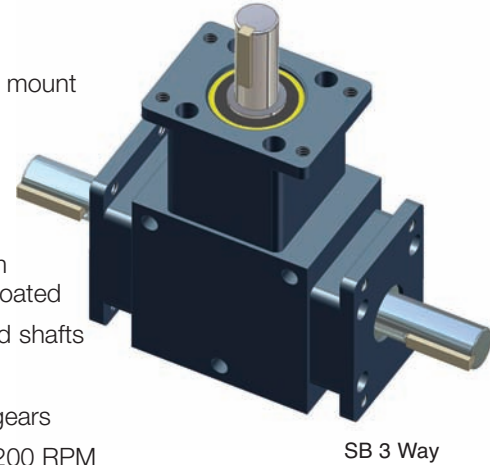
- Pre-lubricated with Lubriplate 1500
- Integrated extended hollow bore shafting for 5/8, 3/4, 1 inch diameters
- Other configurations for 5/8, 3/4, 1 and 1 1/4 inch diameter shafting
- 2 1/2 inch shaft centers (1:1, 3:2 Ratios)
- 2 1/4 inch shaft centers (2:1 Ratio)
- (4) HD R20 Double Sealed Ball Bearings
- Speeds to 1200 RPM
- Maximum hand torque, 609 in. lbs.
- 8620 heat treated 45° helical gears
- Cast aluminum construction, hardcoated
- Optional integrated mounting foot print, Base mount types
- Stainless steel and electro-nickel plated optional
- Search: [CRL](#)



## BRANHAM SPIRAL BEVELS

2 or 3 way, hollow bore

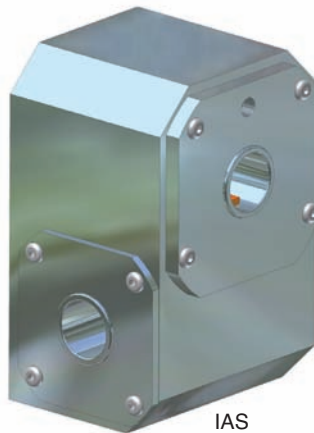
- 1:1 Ratios
- Side base or flange mount
- 2.125 inch housing width models
- Counter rotating model available
- Machined aluminum construction, hardcoated
- Electro Nickel plated shafts
- Sealed gearcase
- 8620 heat treated gears
- 1.65 HP rated at 1200 RPM
- 500 in. lb. static torque rated
- Double sealed ball bearings
- Interchangeable with other brands
- Search: [SB-2.125](#)



## WASHDOWN SERIES

Food processing compatible

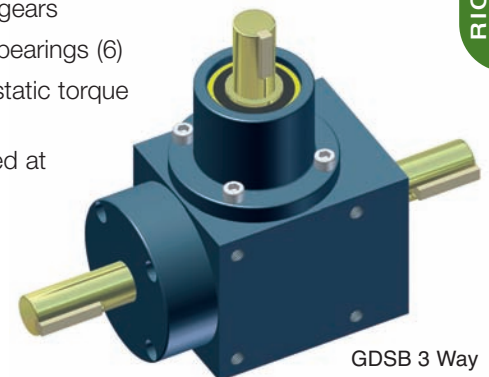
- Stainless Steel and Electro-Nickel Plated
- Compact Mini Add-A-Shaft Versions, 1 inch shaft centers
- Compact Mini 5/8 inch diameter bore sizes
- Standard Add-A-Shaft and Insert-A-Shaft Versions
- Standard 3/4, 1, 1 1/4 inch diameter bore sizes
- (8) Stainless Steel Heavy Duty Sealed Ball Bearings
- Maximum hand torque, 609 in. lbs.
- Maximum hand torque, 264 in. lbs. (Mini)
- 2 1/2 inch shaft centers (1:1, 3:2 Ratios)
- 8620 heat treated 45° helical gears
- Search: [Washdown](#)



## BRANHAM SPIRAL BEVELS

Cyclo-Index, Gribetz Intl Interchanges

- Mattress industry manufacturer's series
- 1:1 Ratio
- 2-, 3-way and hollow bore models
- Extruded aluminum construction, anodized
- Sealed gearcase
- 8620 heat treated gears
- #1623 sealed ball bearings (6)
- Up to 500 in. lbs. static torque rated
- Up to 1.65 HP rated at 1200 RPM
- Search: [GDSB](#)



RIGHT ANGLE  
gear drives

designed with you in mind

Our designs are a direct result from polling OEM design engineers who had first hand experience with right hand helical drives.

Enter search terms at [www.wcbranham.com](http://www.wcbranham.com) for more information