

DISC THK.	DIM. 'A'	DIM. 'B'
5/32	.580	.216
1/4	.674	.310
3/8	.799	.435
1/2	.924	.560
3/4	1.174	.810
1.0	1.424	1.06
1.125	1.549	1.185

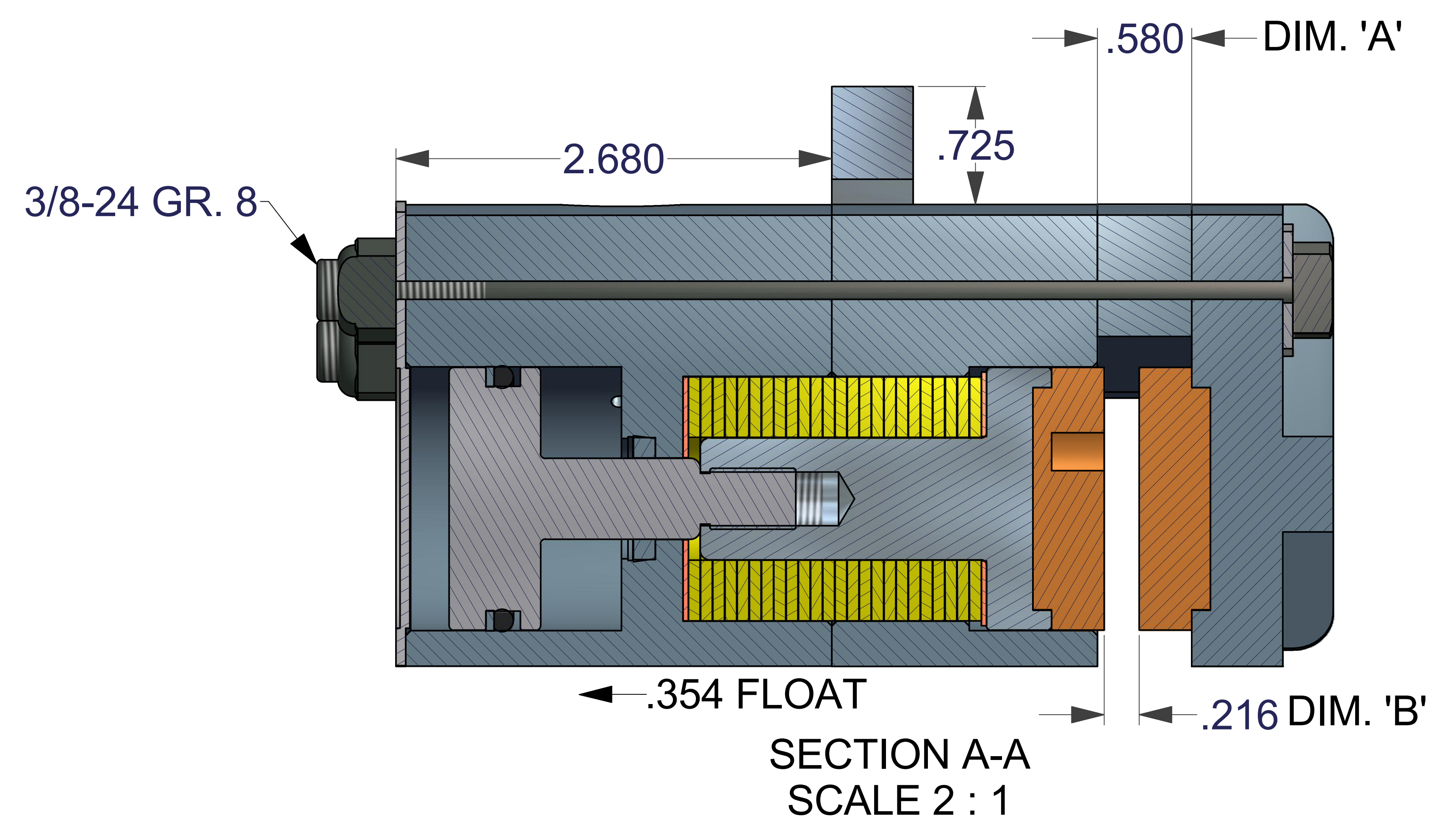
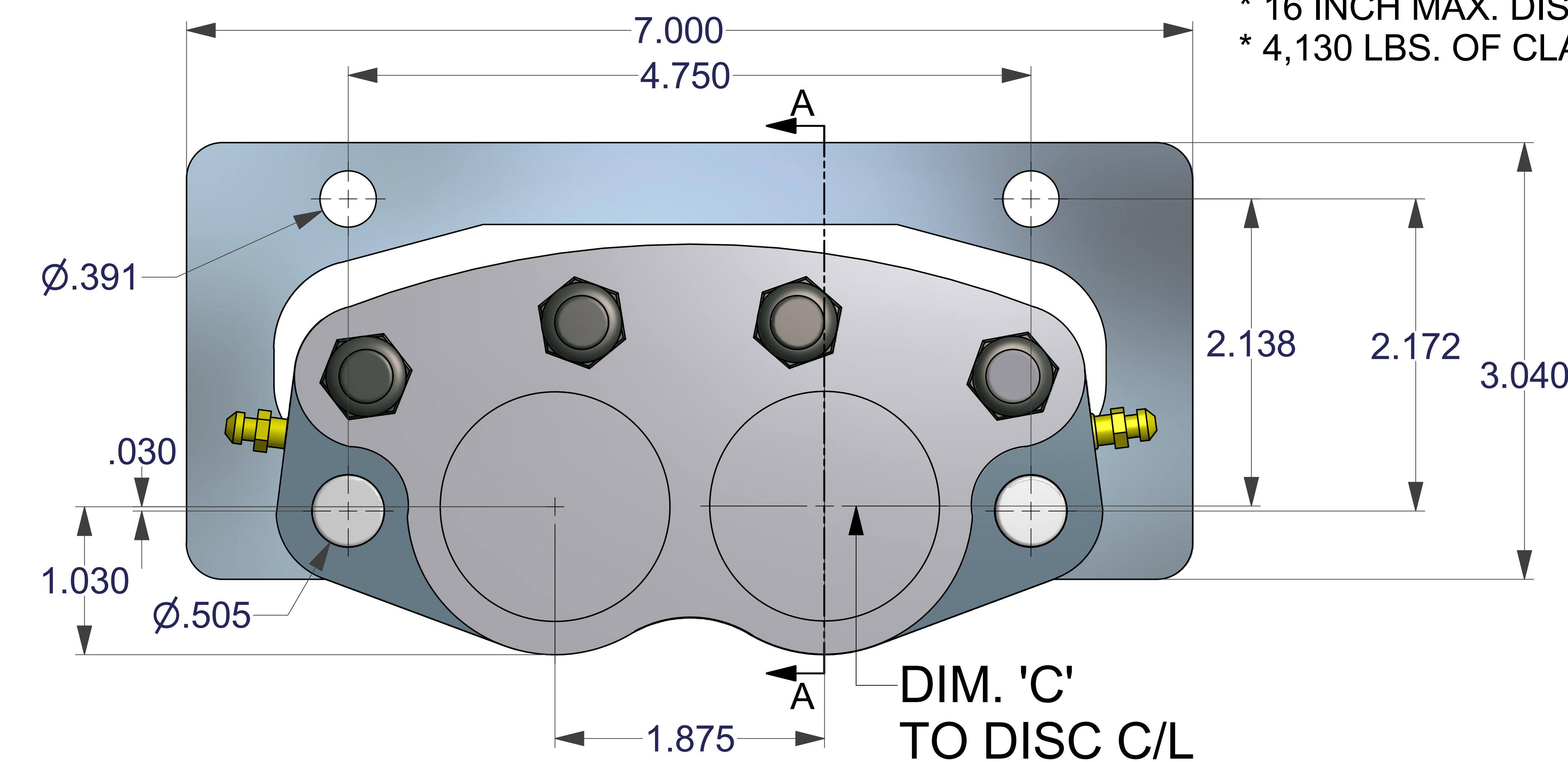
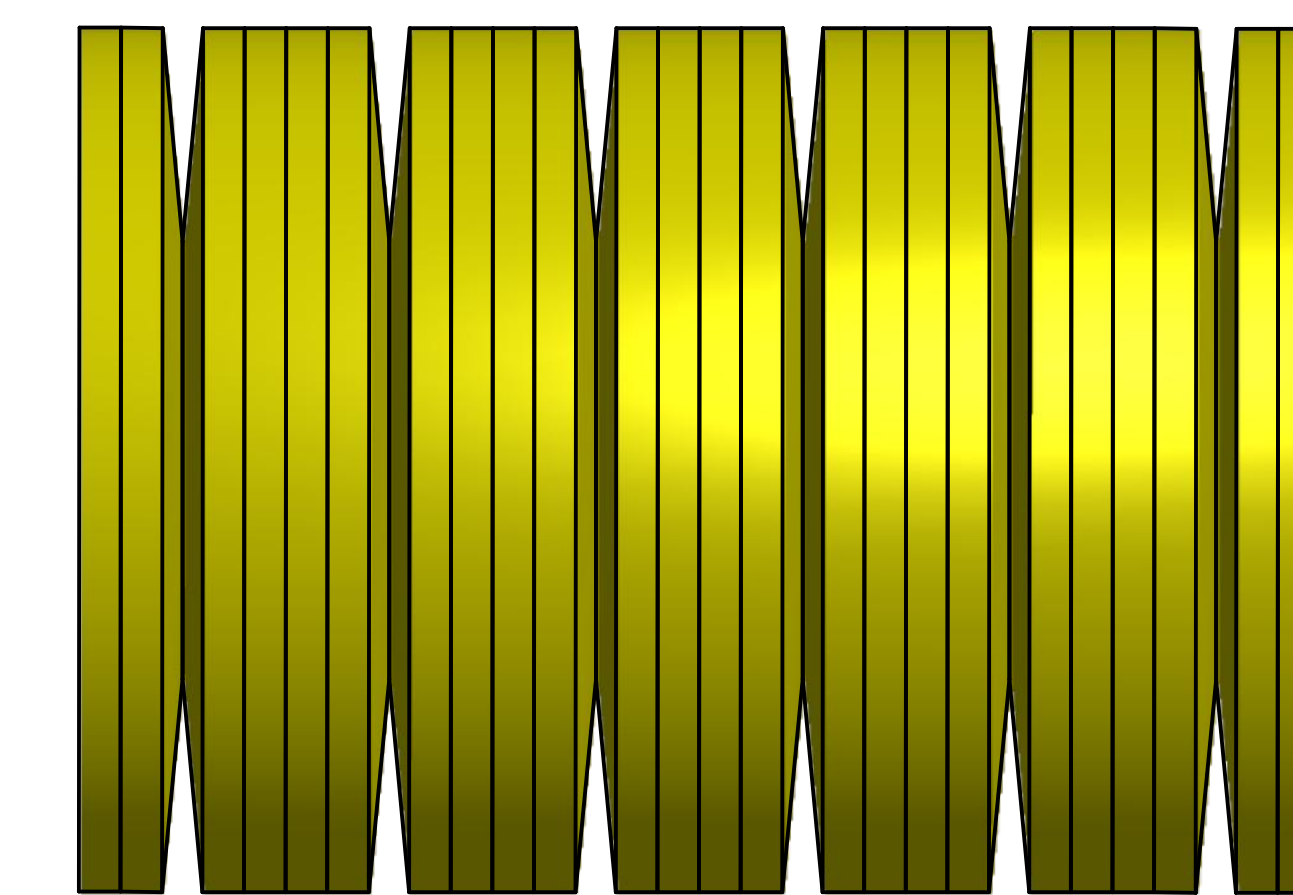
FS400 BRAKES ARE FOR EMERGENCY STOP & HOLDING APPLICATIONS.  
 SPACERS ARE AVAILABLE FOR OTHER DISC THICKNESSES  
 BRAKING RADIUS = DISC RADIUS - .867  
 TORQUE, IN. LBS. = TANGENTIAL FORCE (LBS.) X BRAKING RADIUS, INCHES

TOTAL PAD WEAR, INCHES	TANGENTIAL FORCE (LBS.)
0	1859
.06	1,594
.12	1,329
.18	1,064
.24	799
.30	534
.36	269
.42	0

MODEL	ASSEMBLY NO.	DISC THK.
FS400A	4004-0840	.156
FS400AF	4004-0841	.156
FS400B	4004-0842	.250
FS400BF	4004-0843	.250
FS400E	4004-0844	.500
FS400EF	4004-0845	.500
FS400L	4004-0846	.375
FS400LF	4004-0847	.375

SUFFIX "F" --- FLTG. BRACKET

- \* 2,000 PSI MAX. PRESSURE
- \* 1500 PSI RELEASE PRESSURE
- \* EXTRUDED ALUM. HSGS. HARDCOATED
- \* 8.19 SQ. IN. TOTAL PAD AREA
- \* .45 COFF. OF FRICTION PAD #951023
- \* 1.82 CU. IN. WEARABLE PAD VOL.
- \* SPRING STACKS IN PARALLEL
- \* BUNA N SEALS, VITON OR EPR OPTIONAL
- \* 16 INCH MAX. DISC DIA.
- \* 4,130 LBS. OF CLAMPING FORCE



DISC DIA.	BRAKING RADIUS	DIM. 'C'
8.0	3.132	2.988
10.0	4.132	4.024
12.0	5.132	5.045
16.0	7.132	7.070

UNLESS OTHERWISE SPECIFIED: DO NOT SCALE DRAWING REMOVE ALL BURRS TAP DEPTHS FULL THD. DRILL DEPTHS FULL DIA.	THIRD ANGLE PROJECTION	W.C. BRANHAM INC. RIVER FALLS, WI.	
	DESIGNER: WCB 07/16/10		TITLE: FS400 SERIES
	TOLERANCES: 2 PLACE +/- .010 3 PLACE +/- .005	CHECKER: _____	DRAWING NO. _____
	THREADS: EXTERNAL CLASS 2A INTERNAL CLASS 2B	SCALE: _____ CLASS: _____	REVISION _____

SIZE E