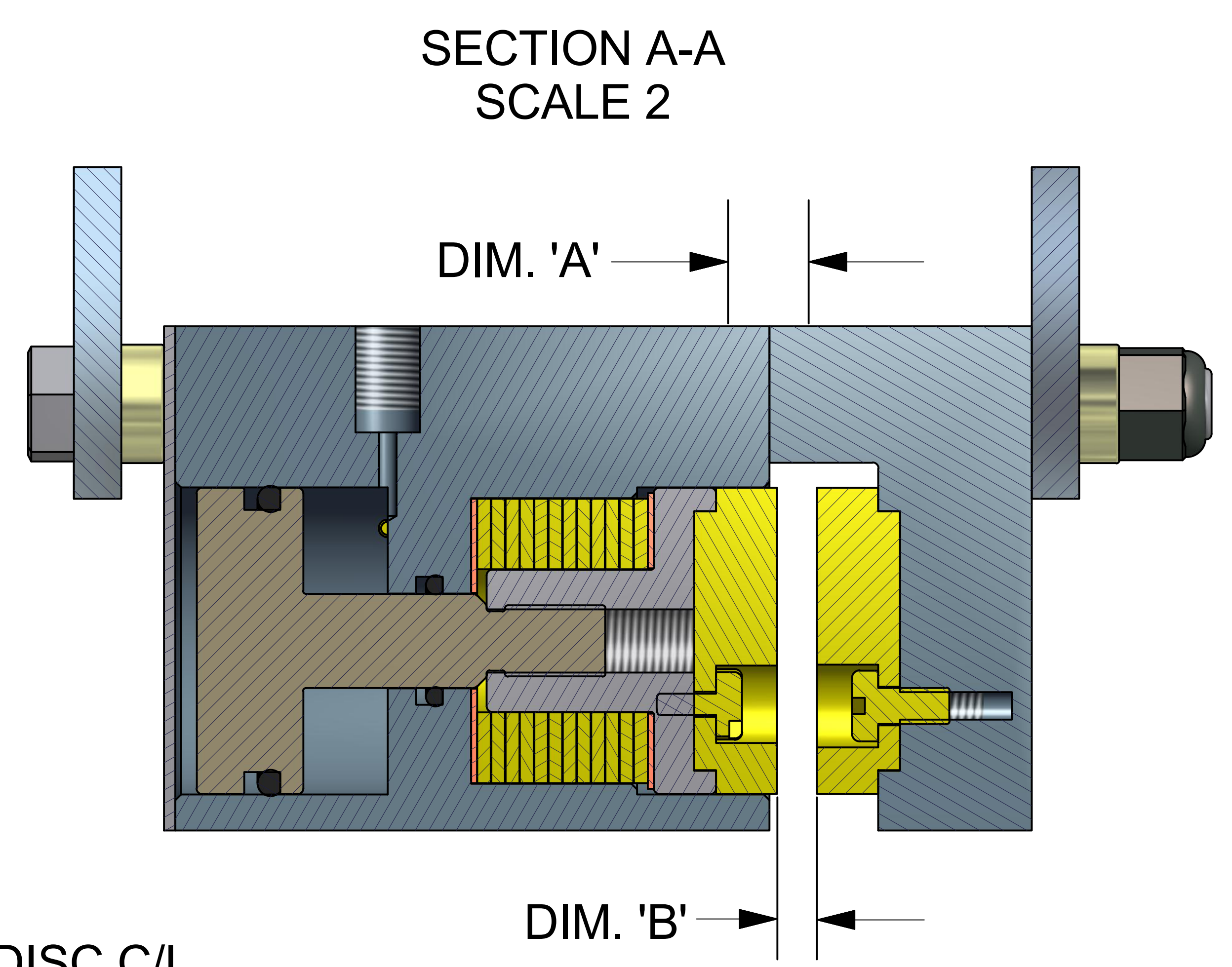
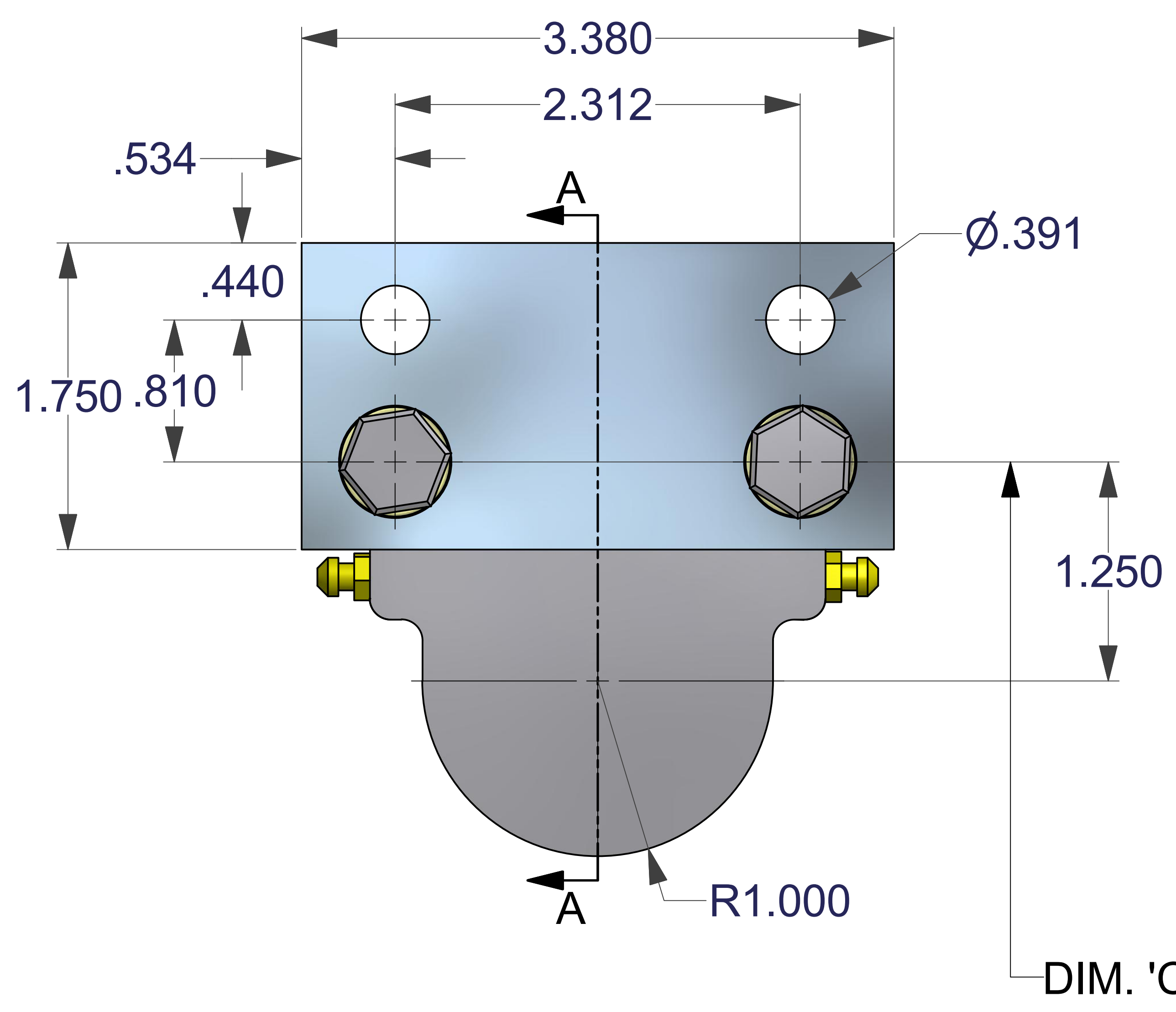
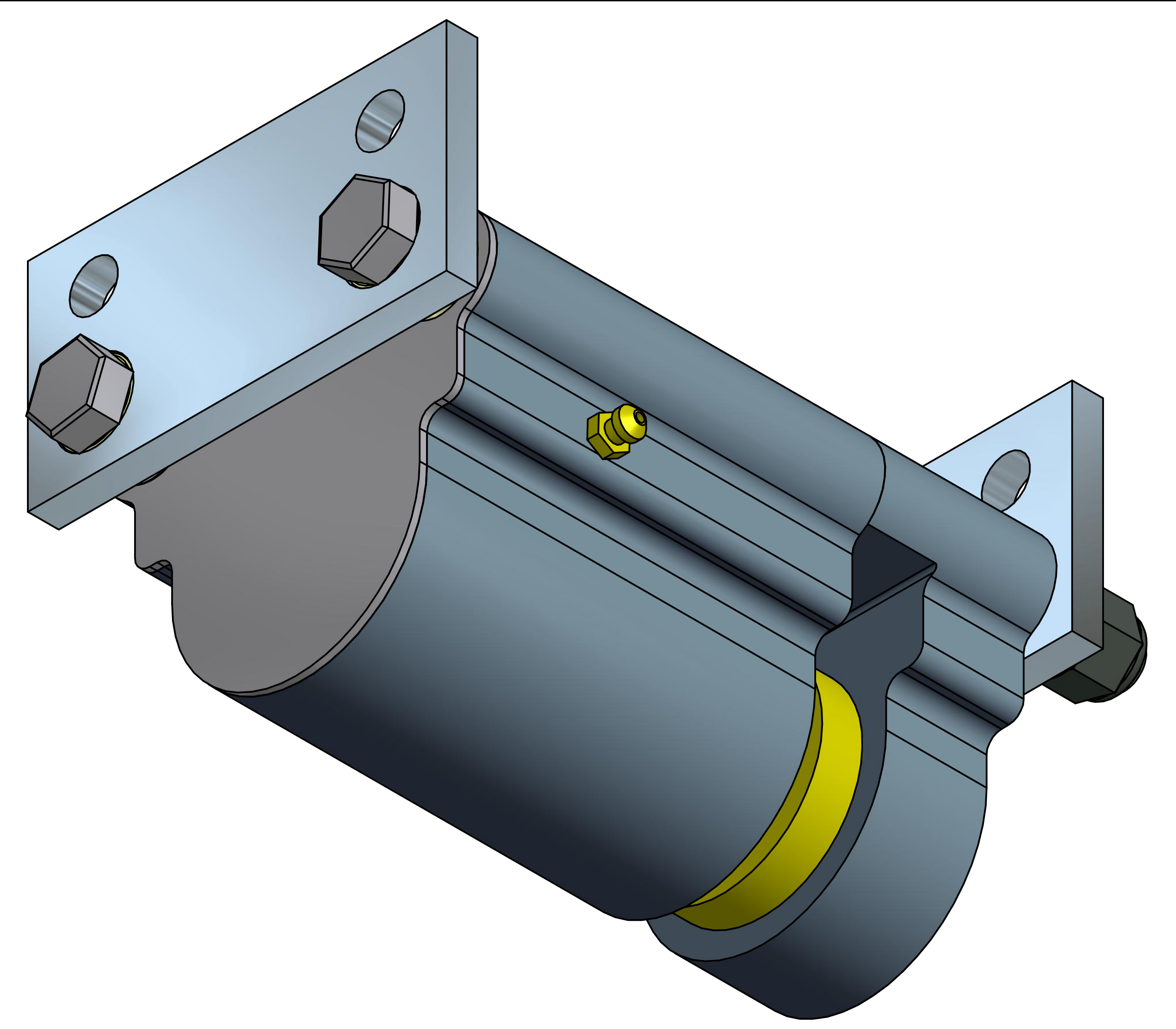


DISC THK.	DIM. 'A'	DIM. 'B'
5/32	----	.216
1/4	.674	.310
3/8	.799	.435
1/2	.924	.560
5/8	1.049	.685
3/4	1.174	.810
1.0	1.424	1.06
1.125	1.549	1.185

TOTAL PAD WEAR, INCHES	TANGENTIAL FORCE, LBS.
0	465
.06	399
.12	332
.18	266
.24	199
.30	133
.36	66
.42	0



- * MAX. PRESSURE -- 1,000 PSI
- * RELEASE PRESSURE -- 750 PSI
- * EXTRUDED ALUM. HSGS. HARDCOATED
- * 4.0 SQ. IN. TOTAL PAD AREA
- * 2.0 SQ. IN. PISTON AREA
- * UNLIMITED DISC DIA.
- * .45 COFF. OF FRICTION PAD #951023
- * BUNA N SEALS, VITON & EPR OPTIONAL
- * 1,033 LBS. OF CLAMPING FORCE
- * ELECTRO NICKEL PLATING
- WITH S.S. FASTENERS OPTIONAL
- * SPACERS FOR OTHER DISC THICKNESSES ARE AVAILABLE

DISC DIA.	BRAKING RADIUS	DIM. 'C'
6 5/16	2.28	3.53
8.0	3.13	4.38
10.0	4.13	5.38
12.0	5.13	6.38
16.0	7.13	8.38

NOTE: AIR/OIL PRESSURE INTENSIFIERS ARE AVAILABLE IN 10:1, 18:1 & 20:1 RATIOS FOR RETRACTING THE CALIPER(S) WITH A PNEUMATIC PRESSURE OF 75 PSI.

SEE WCBRANHAM.COM WEBSITE.

SUFFIX "F" -- FLOATING BRACKETS

MODEL	ASSY. NO.	DISC THK.
FS47AF	4004-0160	.156
FS47BF	4004-0161	.250
FS47EF	4004-0169	.500
FS47LF	4004-0178	.375
FS47A	4004-0181	.156
FS47B	4004-0176	.250
FS47E	4004-0182	.500
FS47L	4004-0163	.375

UNLESS OTHERWISE SPECIFIED: DO NOT SCALE DRAWING REMOVE ALL BURRS TAP DEPTHS FULL THD. DRILL DEPTHS FULL DIA.	THIRD ANGLE PROJECTION		W.C. BRANHAM INC. RIVER FALLS, WI.	
	TOLERANCES 2 PLACE +/- .010 3 PLACE +/- .005	DESIGNER WCB		DATE 05/29/10
	THREADS EXTERNAL CLASS 2A INTERNAL CLASS 2B	CHECKER		DATE
	SCALE	TITLE FS47 SERIES SPRING APPLIED BRAKES		
DRAWING NO.		REVISION		

SIZE E