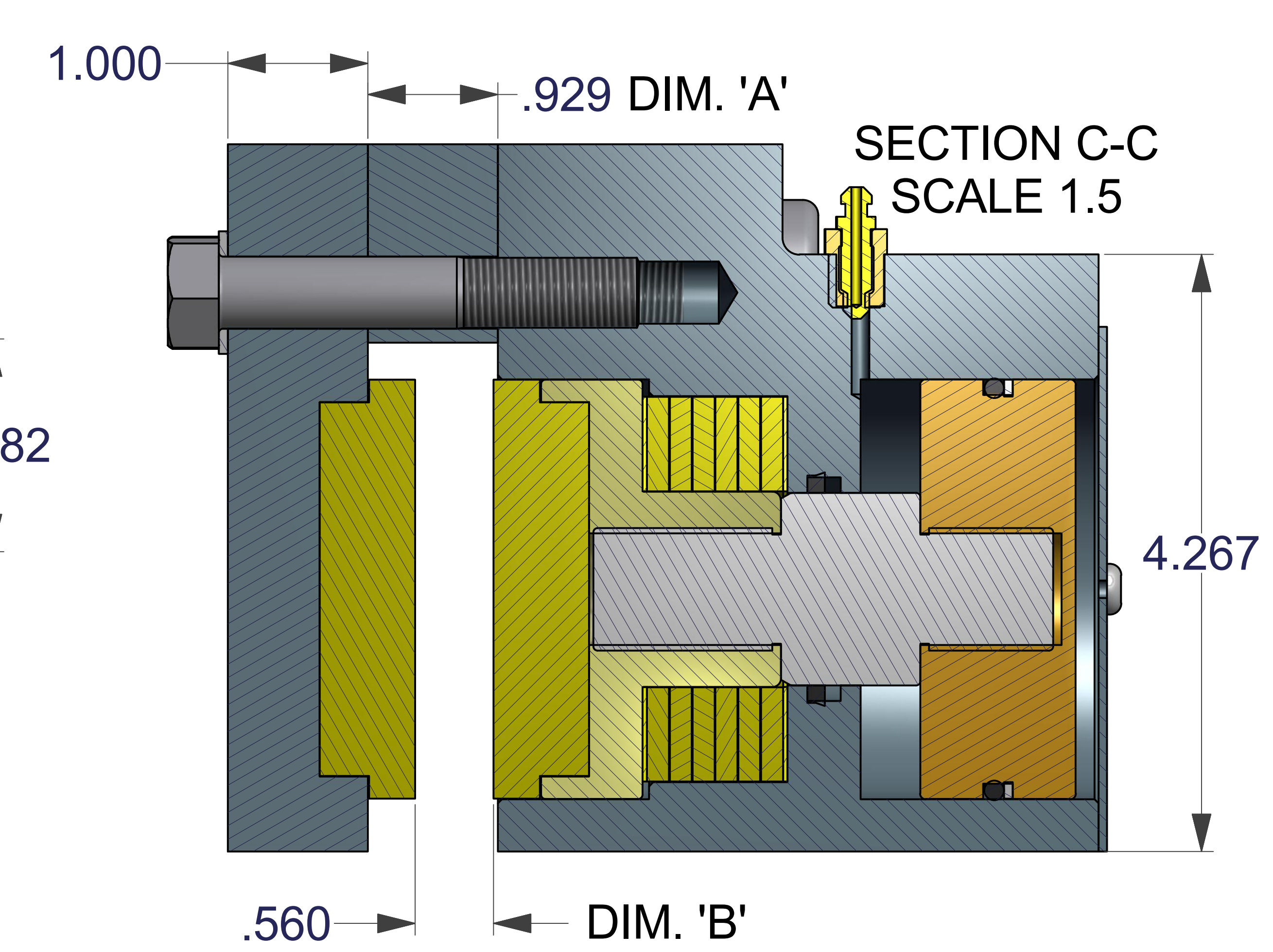
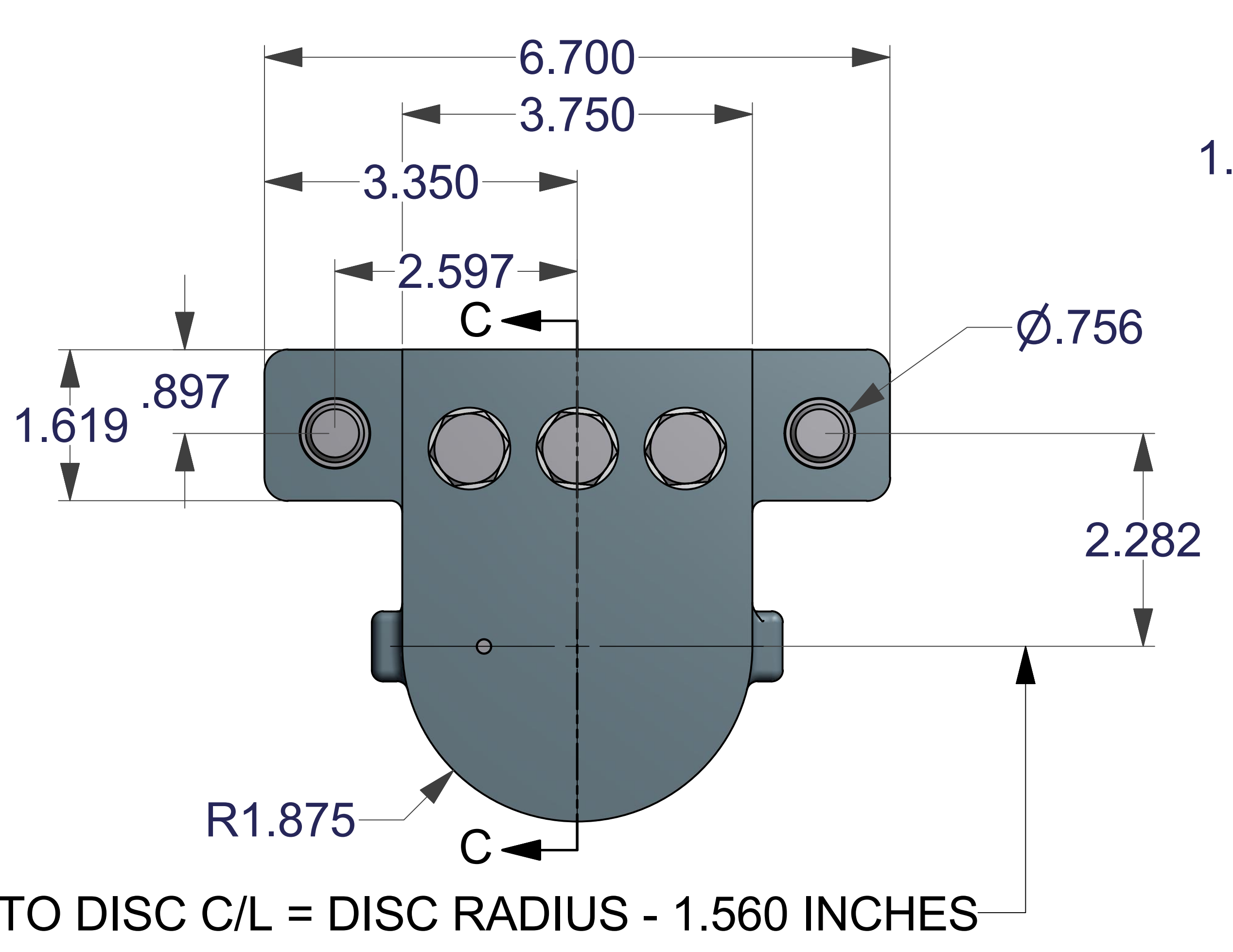
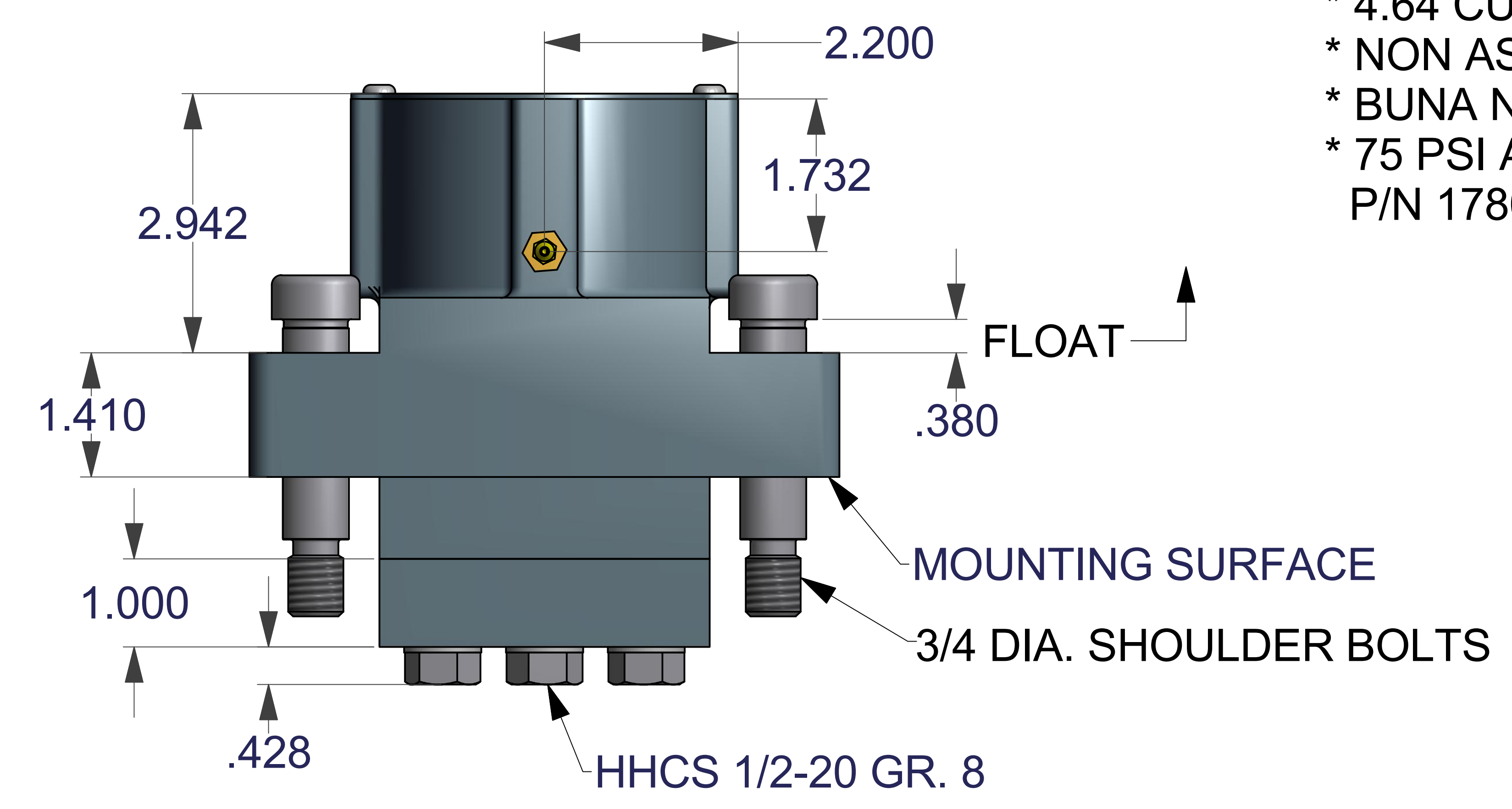
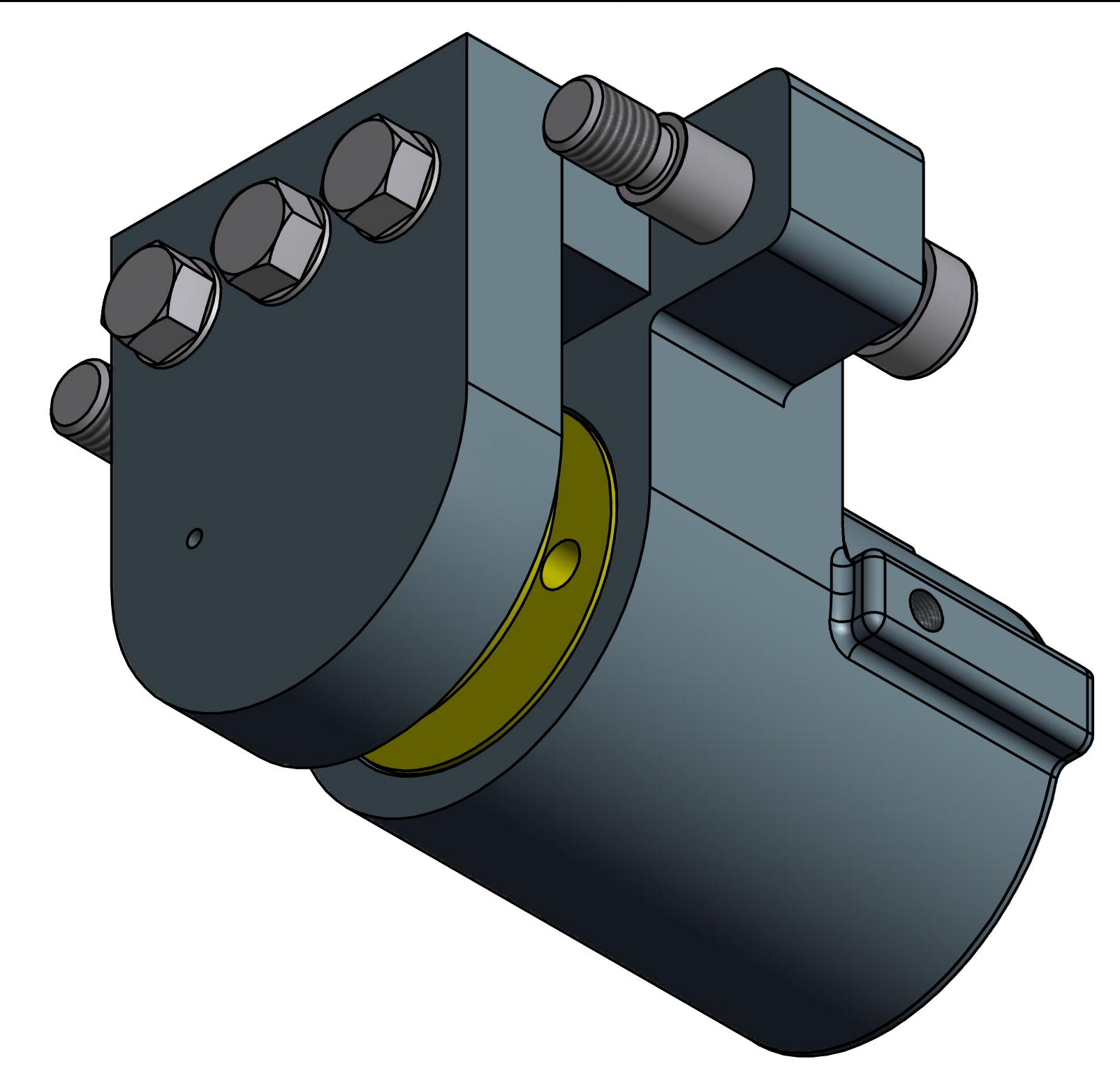
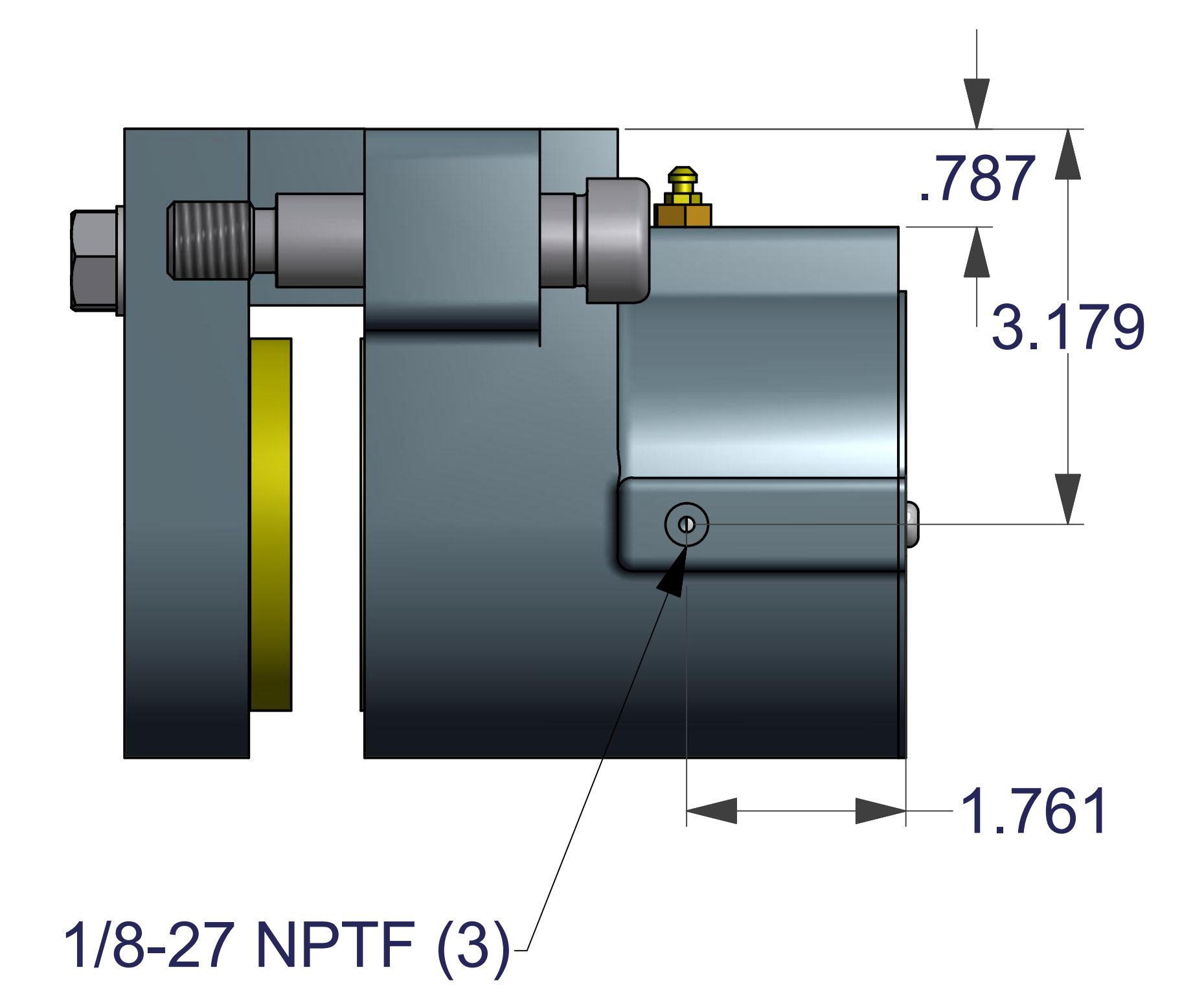


DISC THK.	DIM. 'A'	DIM. 'B'	TOTAL PAD WEAR, IN.	TANGENTIAL FORCE, LBS.
1/4	.679	.310	0	3,059
3/8	.804	.435	.06	2,622
1/2	.929	.560	.12	2,185
5/8	1.054	.685	.18	1,748
3/4	1.179	.810	.24	1,311
1.0	1.429	1.060	.30	874
1 1/8	1.554	1.185	.36	437
			.42	0

- * 6,798 LBS. OF CLAMPING FORCE
- * .45 COFF. OF FRICTION #951023
- * TORQUE, IN. LBS. = DISC RADIUS - 1.56 X TANGENTIAL FORCE
- * MIN. DISC DIA. -- 14.0 INCHES
- * MAX. DISC DIA. -- UNLIMITED
- * 1,500 PSI HYDRAULIC RELEASE PRESSURE
- * 2,000 PSI MAXIMUM HYDRAULIC PRESSURE
- * CAST ALUMINUM CONSTRUCTION
- * HARDCOATED HOUSINGS
- * 14.14 SQ. IN. TOTAL PAD AREA
- * 4.64 CUBIC INCHES TOTAL WEARABLE VOLUME
- * NON ASBESTOS FRICTION MATERIAL
- * BUNA N & POLYURATHANE SEALS
- * 75 PSI AIR RELEASE WITH 18:1 AIR/OIL INTENSIFIER P/N 1780-0000



ASSEMBLY NO.	MODEL	DISC. THK.
4500-0007	FS500SB	1/4
4500-0014	FS500SL	3/8
4500-0015	FS500SE	1/2
4500-0019	FS500SJ	5/8
4500-0016	FS500ST	3/4
4500-0017	FS500SO	1.0
4500-0008	FS500SQ	1 1/8



DISC DIA.	BRAKING RADIUS
14	5.44
16	6.44
18	7.44
20	8.44
30	13.44

FS500 SERIES BRAKES ARE FOR EMERGENCY STOP & HOLDING APPLICATIONS ONLY. DISC SPACERS ARE AVAILABLE FOR OTHER DISC THICKNESSES.

UNLESS OTHERWISE SPECIFIED: DO NOT SCALE DRAWING REMOVE ALL BURRS TAP DEPTHS FULL THD. DRILL DEPTHS FULL DIA.	THIRD ANGLE PROJECTION	W.C. BRANHAM INC. RIVER FALLS, WI.	
	DESIGNER: WCB 06/08/11		TITLE: FS500S SERIES FLOATING MOUNT
	TOLERANCES: 2 PLACE +/- .010 3 PLACE +/- .005	CHECKER: _____	DRAWING NO. _____
	THREADS: EXTERNAL CLASS 2A INTERNAL CLASS 2B	SCALE: _____ CLASS: _____	REVISION _____

SIZE E