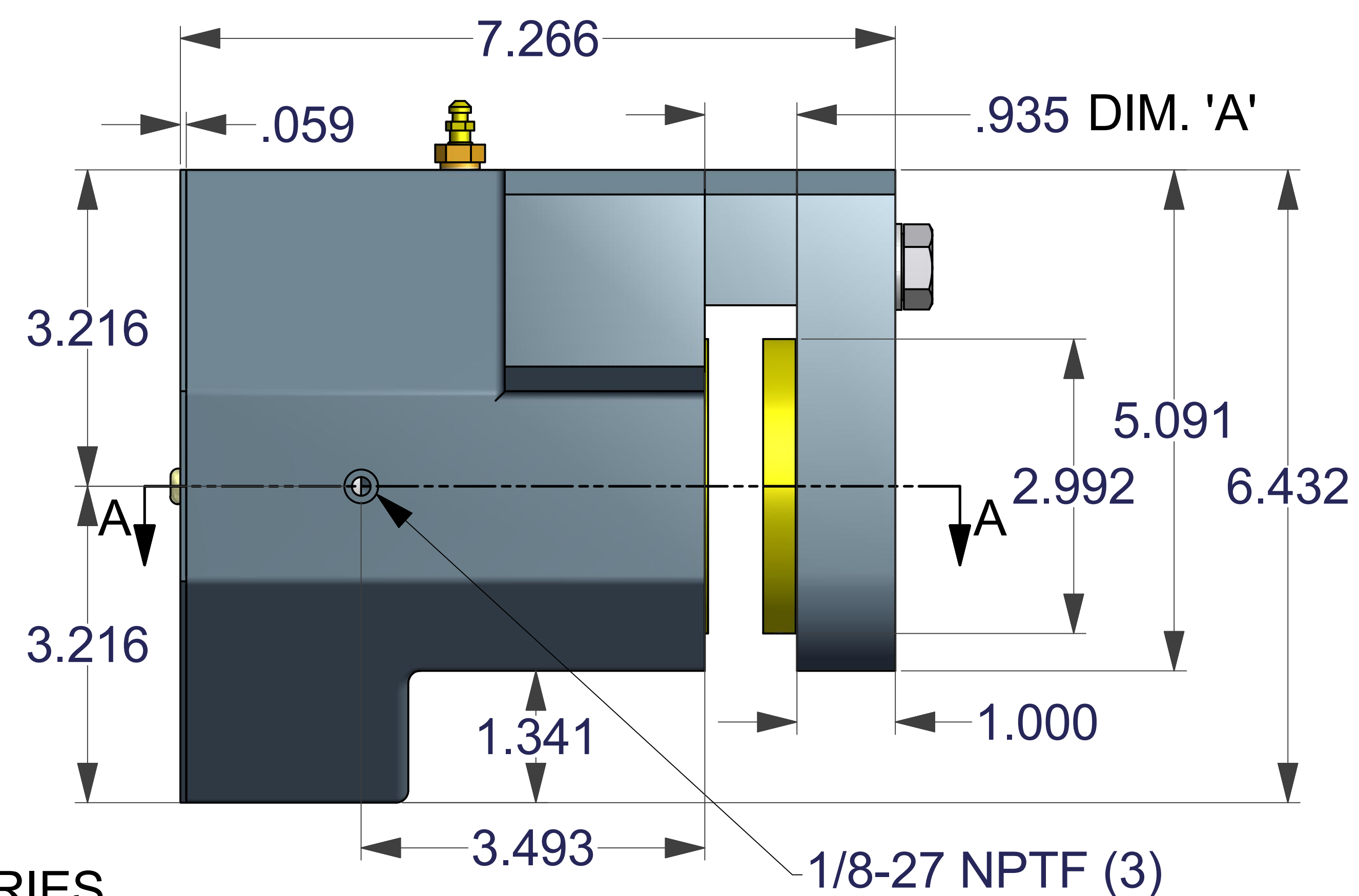
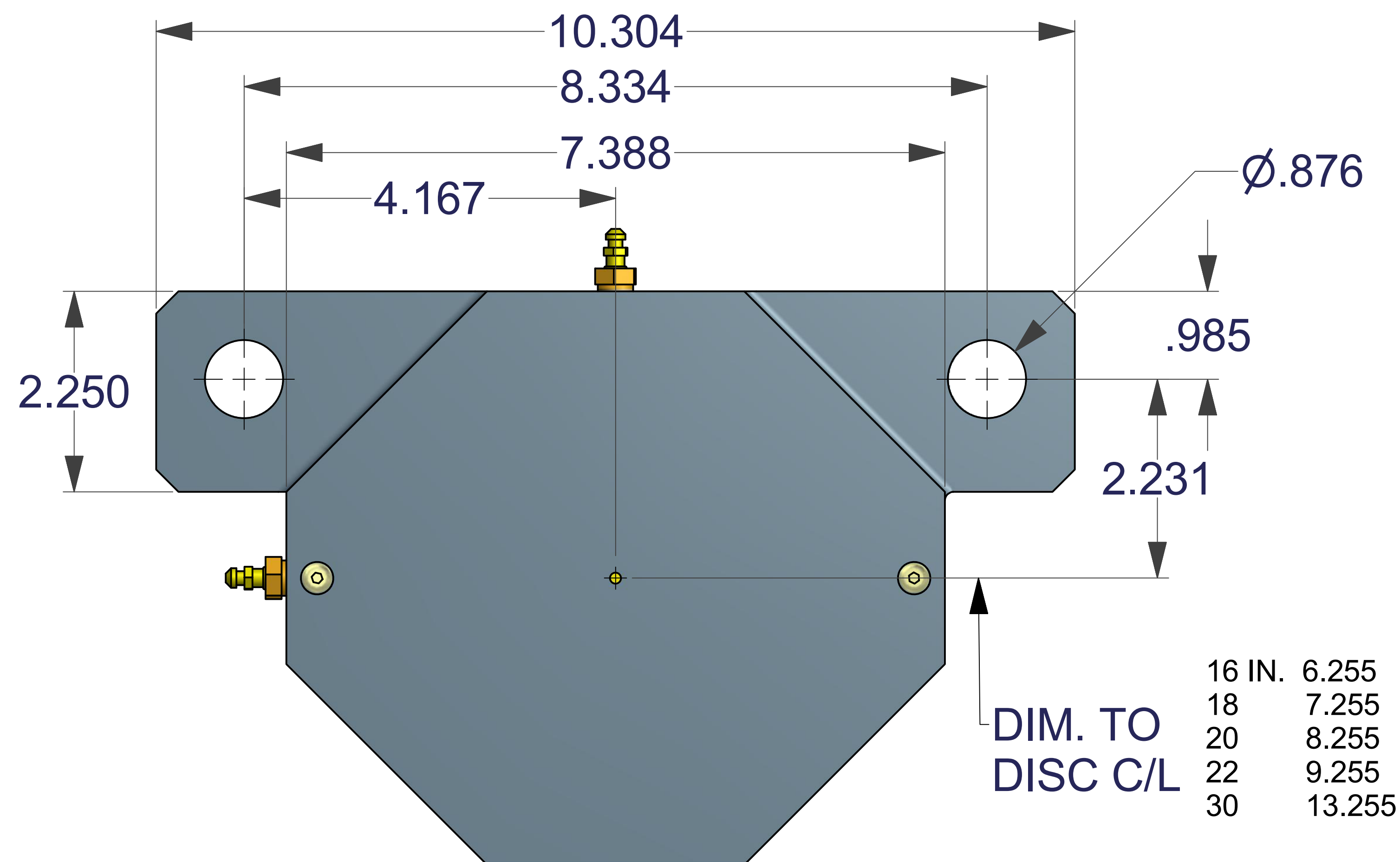
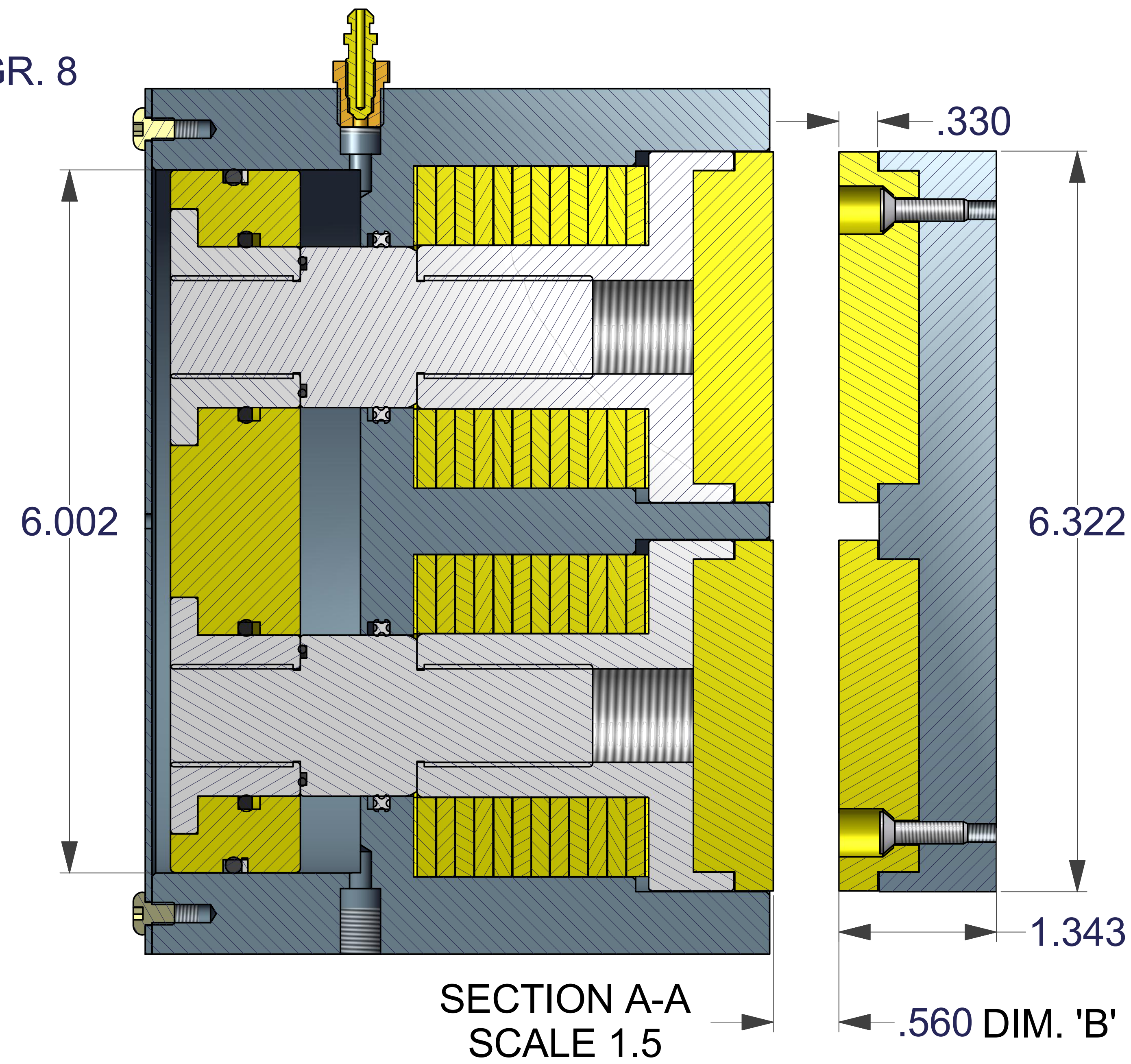
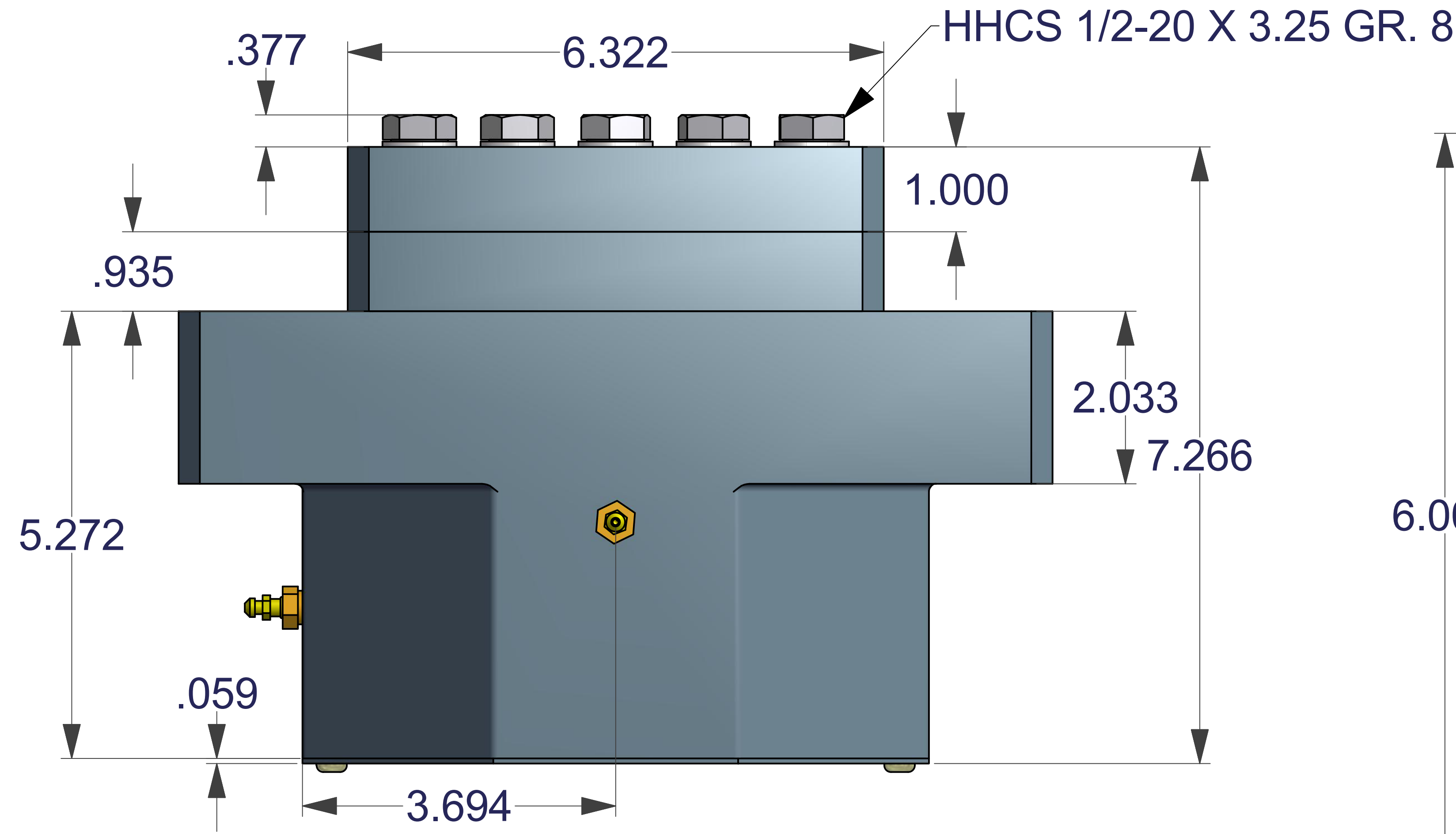


FS580 SERIES BRAKES ARE FOR EMERGENCY STOP & HOLD APPLICATIONS ONLY.  
DISC SPACERS FOR OTHER DISC THICKNESSES ARE AVAILABLE.

| DISC DIA. | BRAKING RADIUS |
|-----------|----------------|
| 16        | 6.471          |
| 18        | 7.471          |
| 20        | 8.471          |
| 22        | 9.471          |
| 30        | 13.471         |



- \* 13,596 LBS. OF CLAMPING FORCE
- \* (2) STACKS OF 12 SPRINGS IN SERIES
- \* .45 COFF. OF FRICTION
- \* TORQUE, IN. LBS. = DISC RADIUS - 1.56 X TANGENTIAL FORCE
- \* 800 PSI RELEASE PRESSURE
- \* 1,000 PSI MAX. PRESSURE
- \* CAST ALUMINUM CONSTRUCTION
- \* HARDCOATED HOUSINGS
- \* 28.12 SQ. INCHES TOTAL FRICTION AREA
- \* 9.28 CUBIC INCHES WEARABLE MATERIAL
- \* NITRILE SEALS
- \* 16 IN. MINIMUM DISC DIA.
- \* UNLIMITED DISC DIA.

| TOTAL PAD WEAR, INCHES | TANGENTIAL FORCE, LBS. |
|------------------------|------------------------|
| 0                      | 6,118                  |
| .06                    | 5,353                  |
| .12                    | 4,588                  |
| .18                    | 3,823                  |
| .24                    | 3,058                  |
| .30                    | 2,293                  |
| .36                    | 1,528                  |
| .42                    | 763                    |
| .48                    | 0                      |

| DISC THK. | DIM. 'A' | DIM. 'B' |
|-----------|----------|----------|
| 1/4       | .685     | .310     |
| 3/8       | .810     | .435     |
| 1/2       | .935     | .560     |
| 5/8       | 1.060    | .685     |
| 3/4       | 1.185    | .810     |
| 1.0       | 1.435    | 1.060    |
| 1.125     | 1.560    | 1.185    |

| PART NO.  | MODEL   | DISC THK. |
|-----------|---------|-----------|
| 4006-0050 | FS580SB | 1/4       |
| 4006-0051 | FS580SL | 3/8       |
| 4006-0052 | FS580SE | 1/2       |
| 4006-0053 | FS580SJ | 5/8       |
| 4006-0054 | FS580ST | 3/4       |
| 4006-0055 | FS580SO | 1.0       |
| 4006-0056 | FS580SQ | 1.125     |

|   |                          |
|---|--------------------------|
| UNLESS OTHERWISE SPECIFIED:<br>DO NOT SCALE DRAWING<br>REMOVE ALL BURRS<br>TAP DEPTHS FULL THD.<br>DRILL DEPTHS FULL DIA. | THIRD ANGLE PROJECTION   |
| TOLERANCES<br>2 PLACE +/- .010<br>3 PLACE +/- .005  | DESIGNER<br>WCB 03/29/11 |
| THREADS<br>EXTERNAL CLASS 2A<br>INTERNAL CLASS 2B   | CHECKER<br>DATE          |
| SCALE   | CLASS                    |

|                                       |          |
|---------------------------------------|----------|
| W.C. BRANHAM INC.<br>RIVER FALLS, WI. |          |
| TITLE<br>FS580 DUAL<br>BORE SERIES    |          |
| DRAWING NO.                           | REVISION |

SIZE  
E