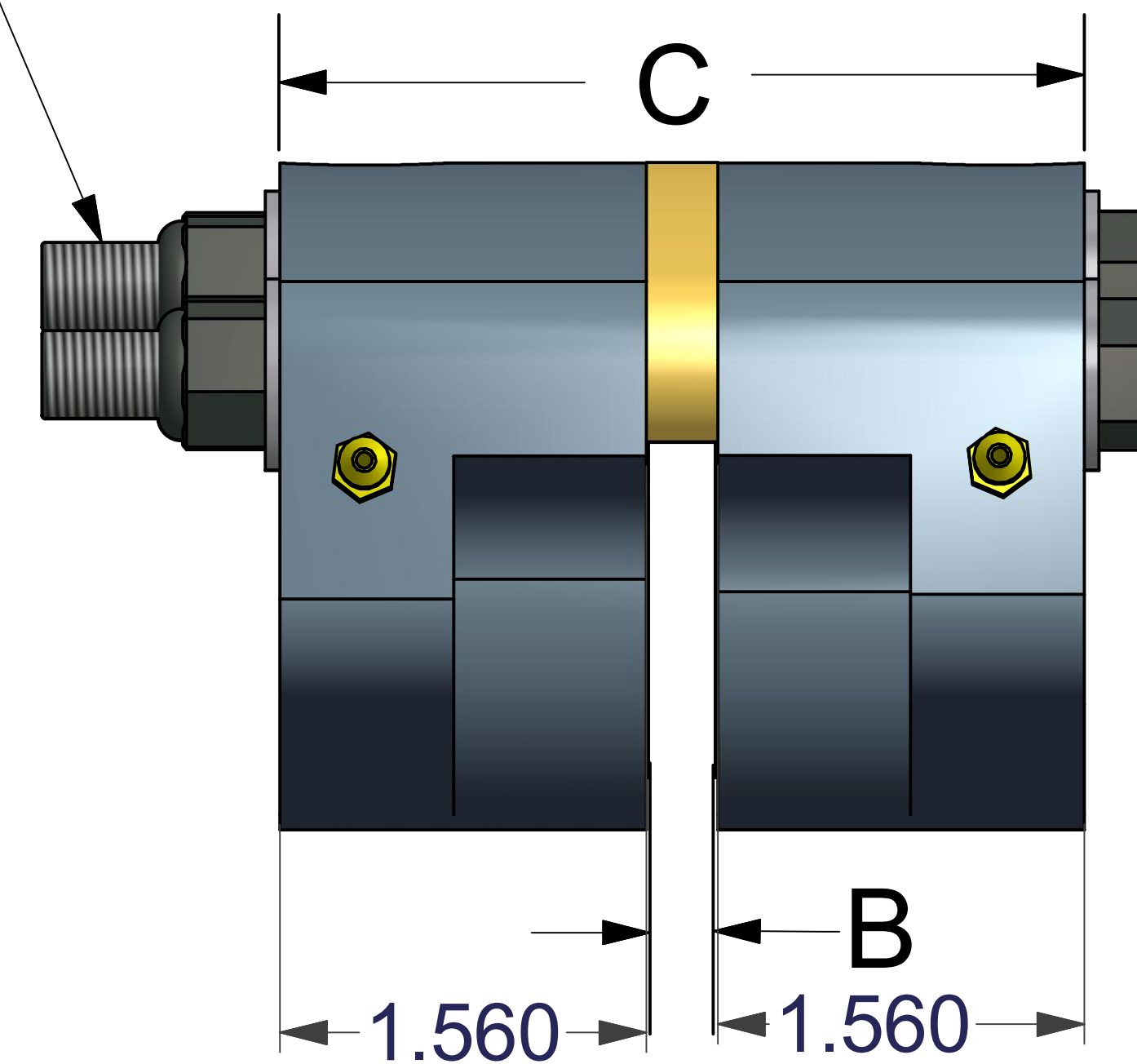
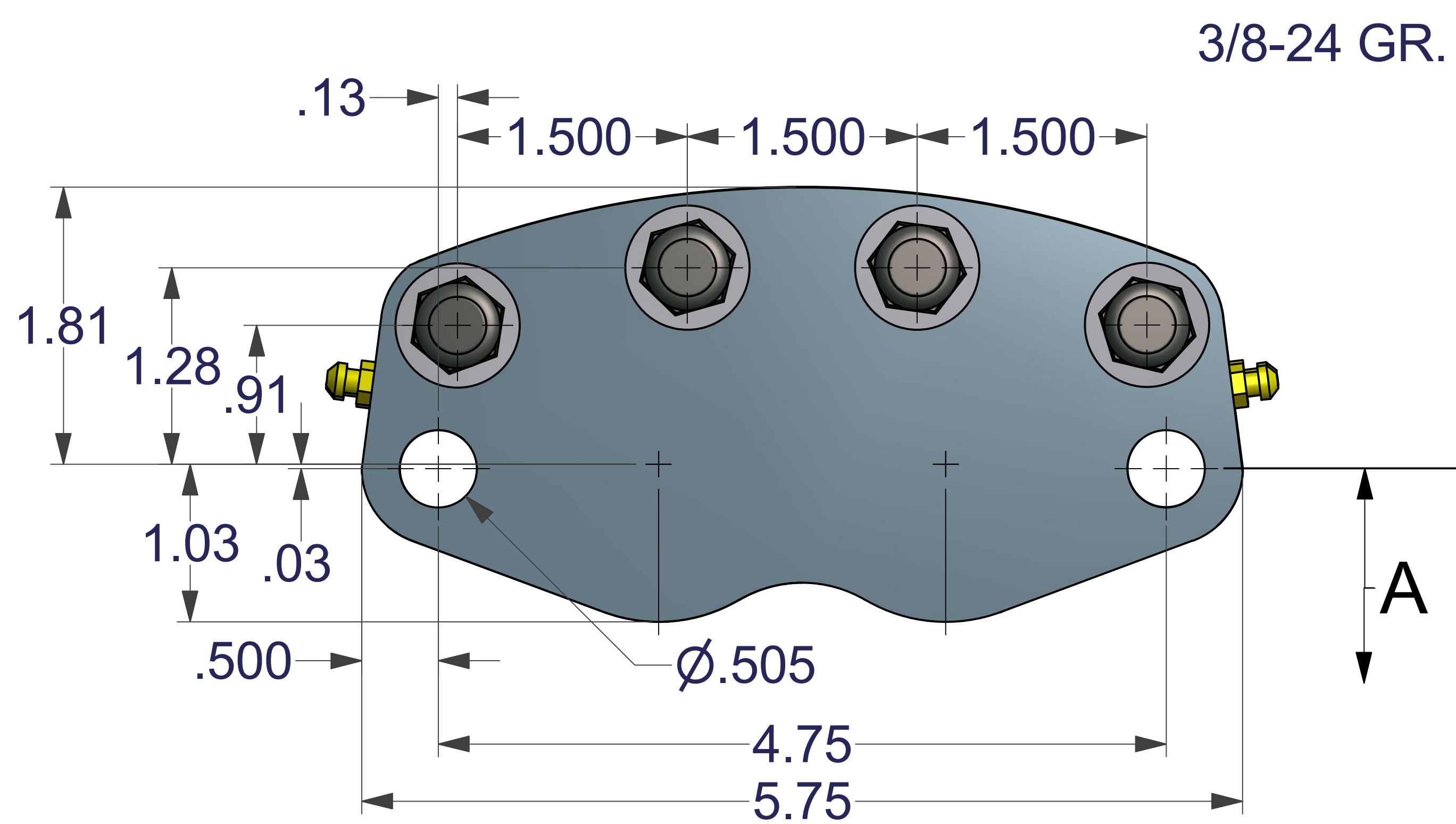
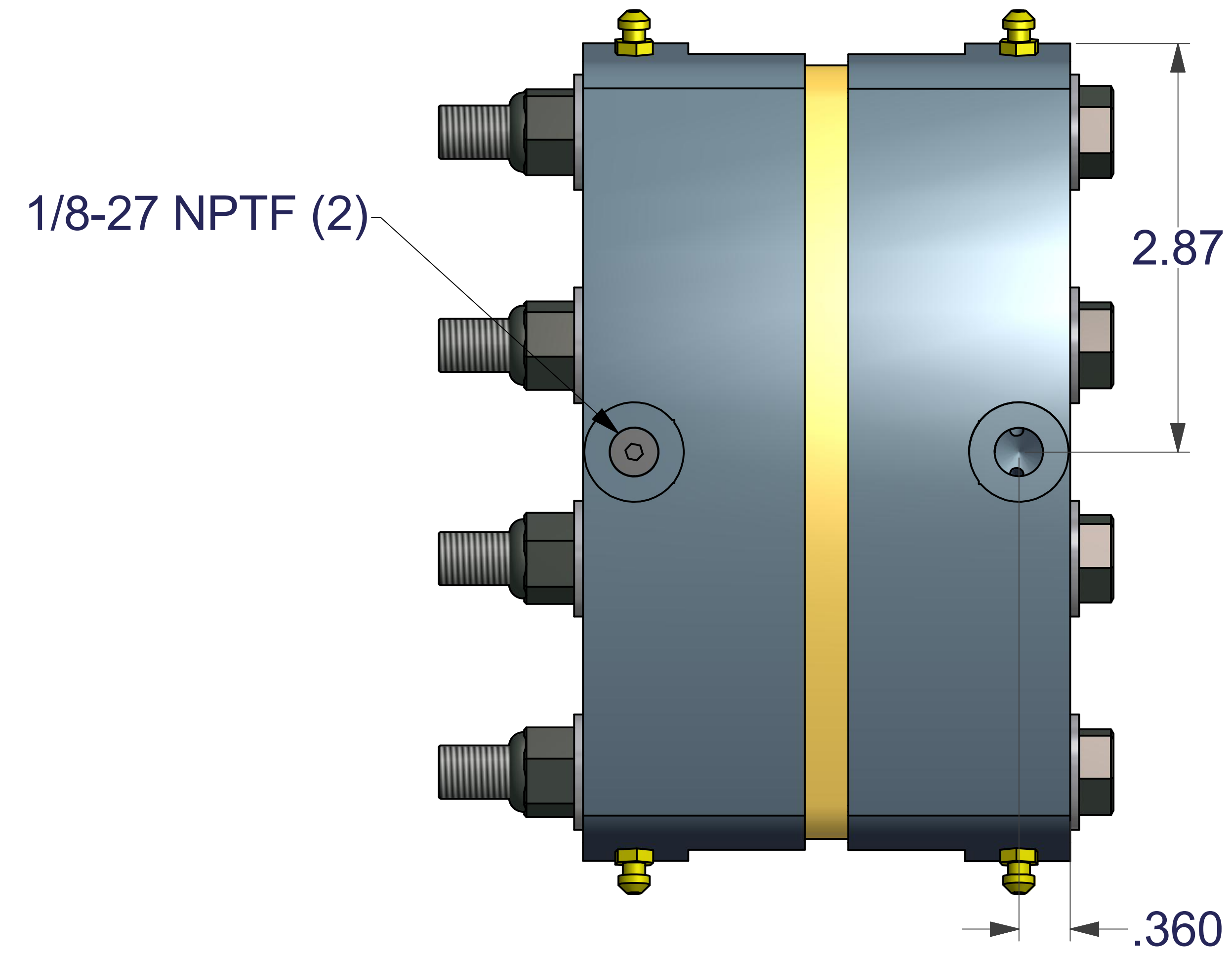
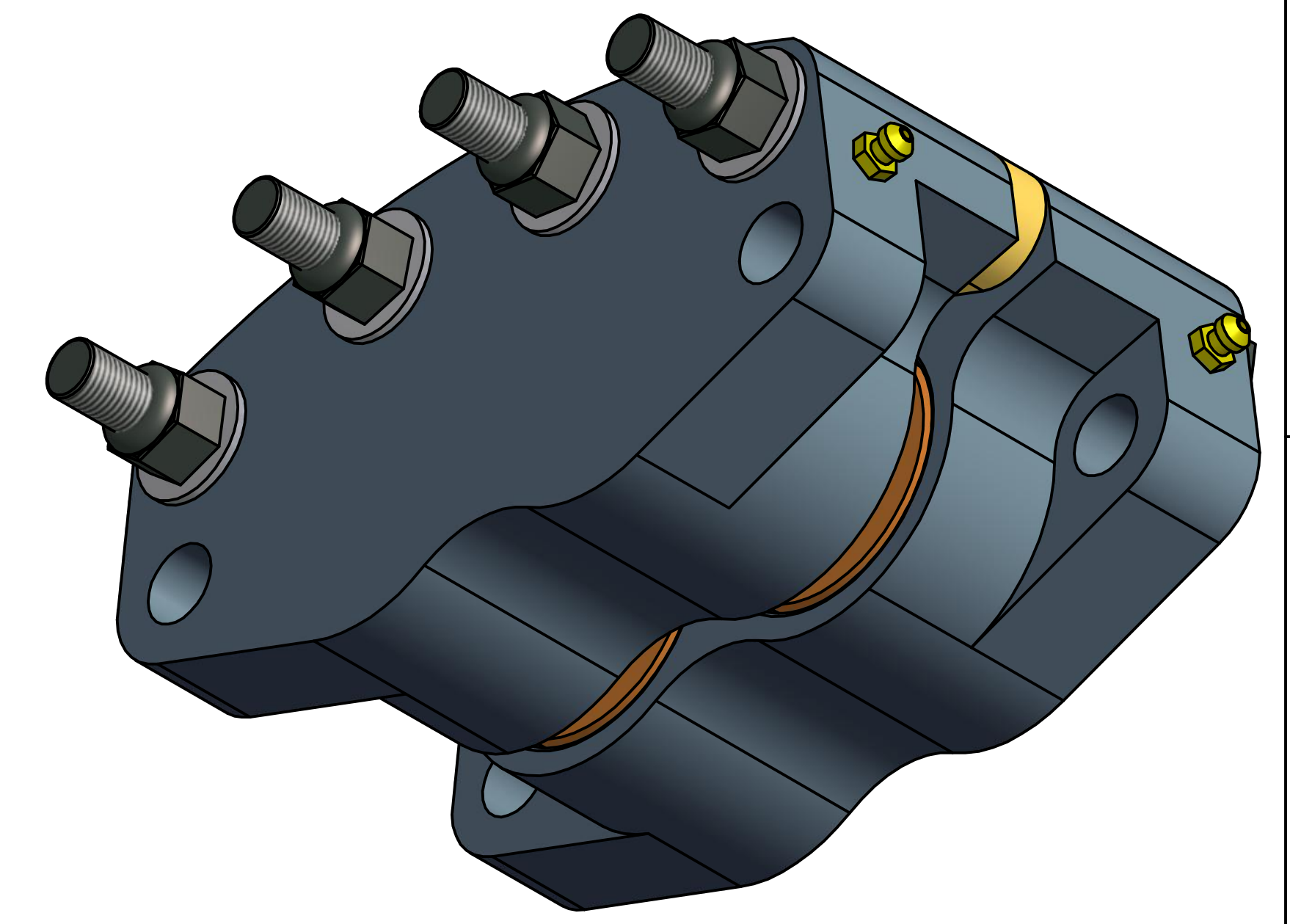


DISC. DIA.--DISC WIDTH--BRAKING RADIUS--'A' DIM. TO DISC C/L-- SPACER OPTION--'B' DIM.--'C' DIM.

6 5/16	.156	2.38	2.13	A	.283	3.425
8.0	.156	3.15	3.00	A	.283	3.425
10.0	.156	4.11	4.00	A	.283	3.425
12.0	.156	5.08	5.00	A	.283	3.425
16.0	.250	7.21	7.09	B	.373	3.515
	.375			L	.503	3.645
	.500			E	.623	3.765



MODEL ASSY. NO. DISC THK.

H200DA	4004-0013	.156
H200DAG	4004-0014	.156
H200DB	4004-0015	.250
H200DBG	4004-0016	.250
H200DL	4004-0021	.375
H200DLG	4004-0023	.375
H200DE	4004-0022	.500
H200DEG	4004-0024	.500
H200DAR	4004-0104	.156
H200DBR	4004-0105	.250
H200DLR	4004-0106	.375
H200DER	4004-0107	.500
H200DARG	4004-0108	.156
H200DBRG	4004-0109	.250
H200DLRG	4004-0110	.375
H200DERG	4004-0111	.500

- \* 1,500 PSI MAX. PRESSURE
- \* (R) RETRACTABLE PISTONS
- \* (G) EPR SEALS FOR DOT3 FLUID
- \* EXTRUDED ALUM. HSGS. HARDCOATED
- \* 8.0 SQ. IN. TOTAL PAD AREA
- \* 4.0 SQ. IN. PISTON AREA
- \* 16 IN. MAX. DISC DIA.
- \* ELECTRO NICKEL W/S.S. FASTENERS OPTIONAL

TORQUE RATINGS @ 1,000 PSI (INCH LBS.)  
DISC DIA. DYNAMIC STATIC

6 5/16	6,854	3,427
8.0	9,072	4,536
10.0	11,836	5,918
12.0	14,630	7,315
16.0	20,764	10,382

UNLESS OTHERWISE SPECIFIED: DO NOT SCALE DRAWING REMOVE ALL BURRS TAP DEPTHS FULL THD. DRILL DEPTHS FULL DIA.	THIRD ANGLE PROJECTION	WC BRANHAM INC. RIVER FALLS, WI
	DESIGNER: WCB DATE: 03/02/11	
	TOLERANCES: 2 PLACE +/- .010 3 PLACE +/- .005	CHECKER: _____ DATE: _____
THREADS: EXTERNAL CLASS 2A INTERNAL CLASS 2B	SCALE: _____ CLASS: _____	

SIZE E