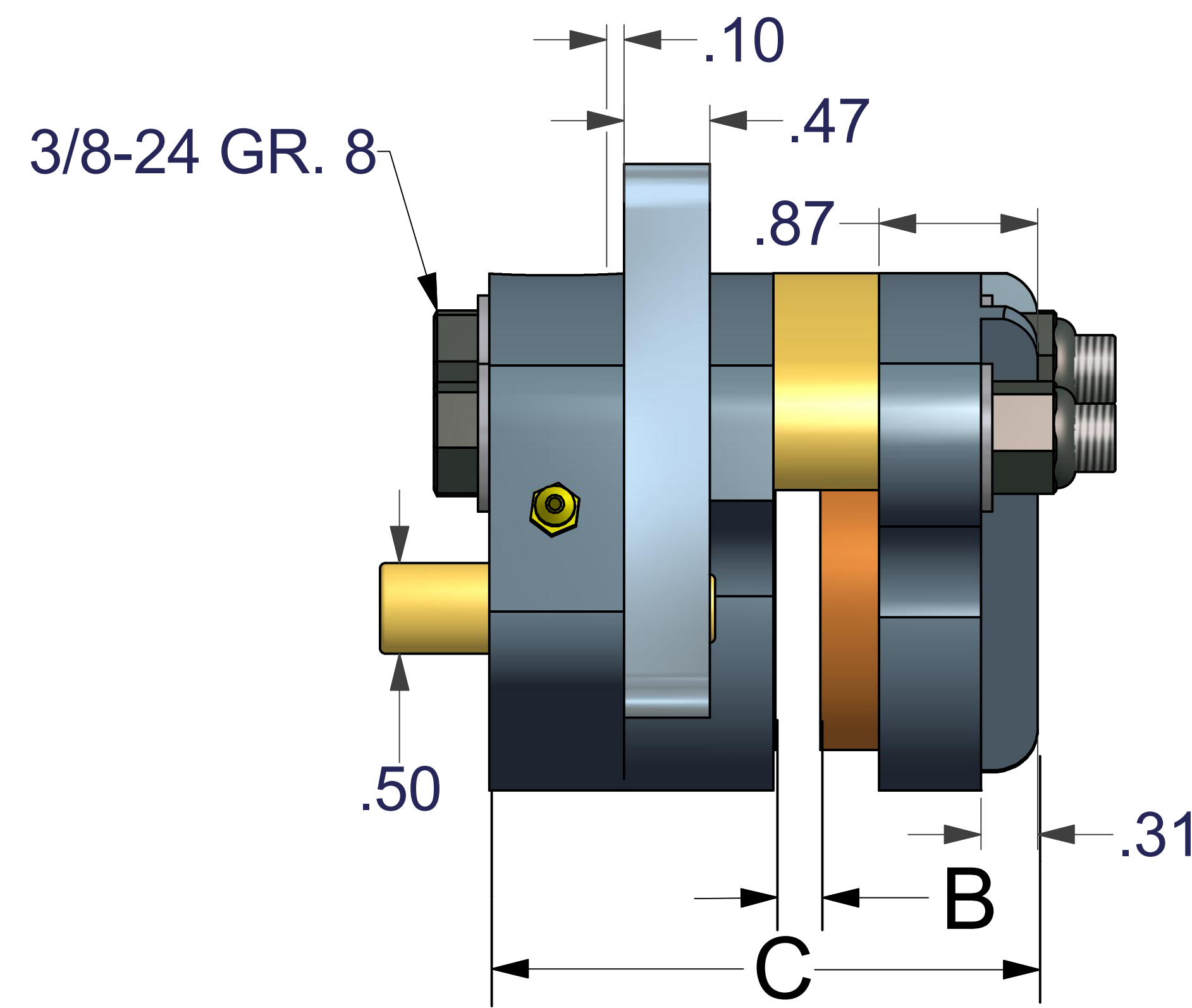
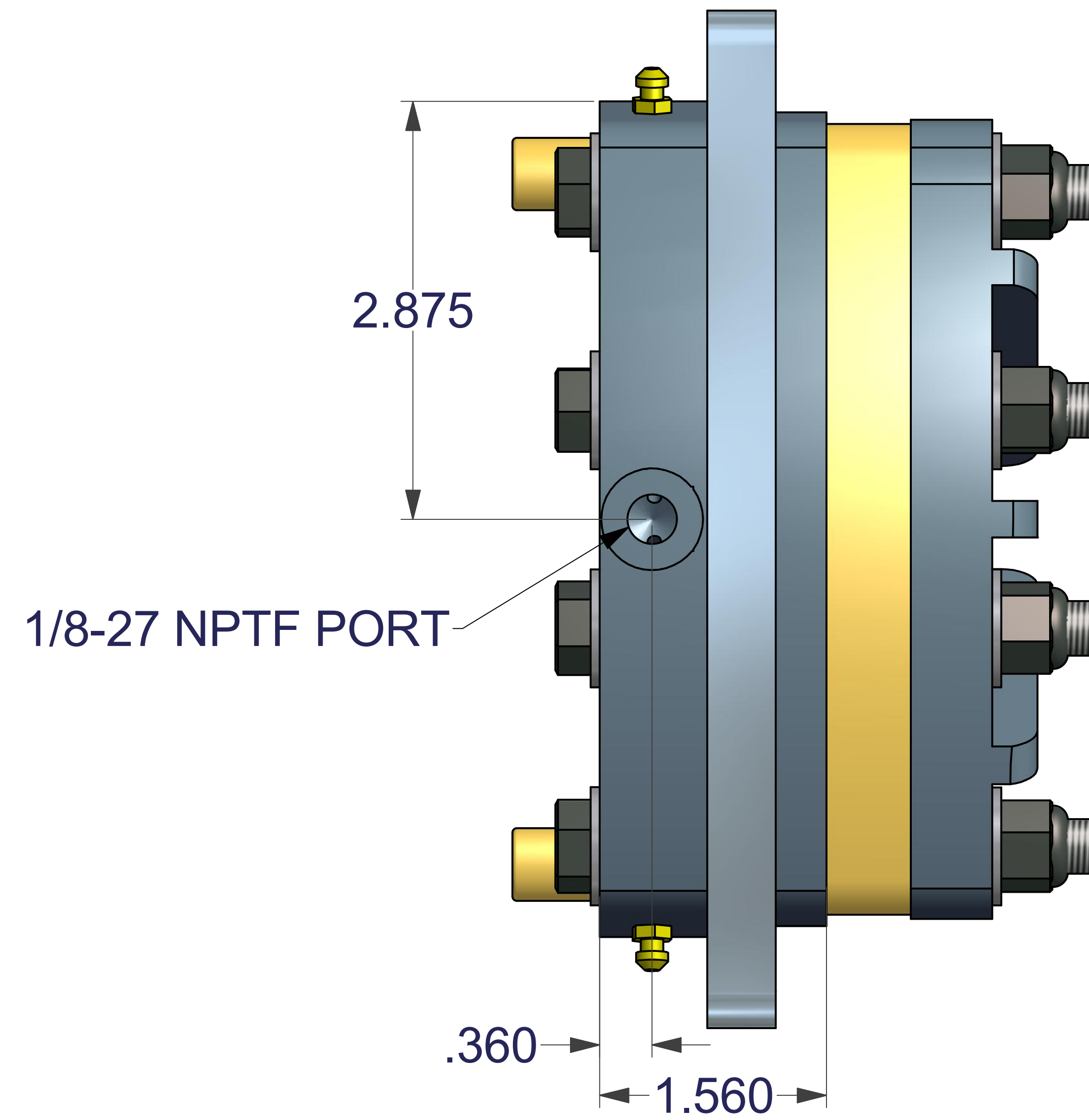
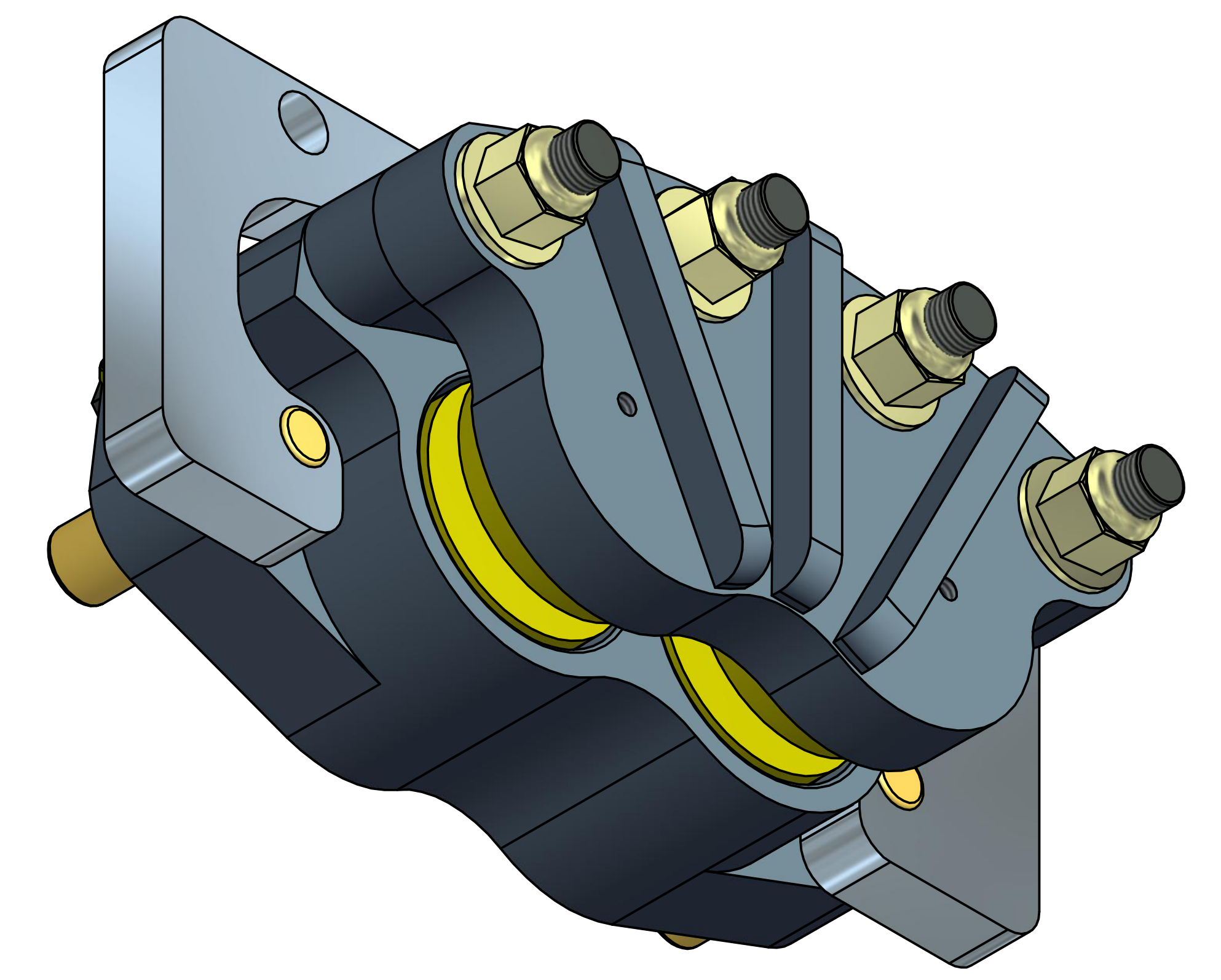
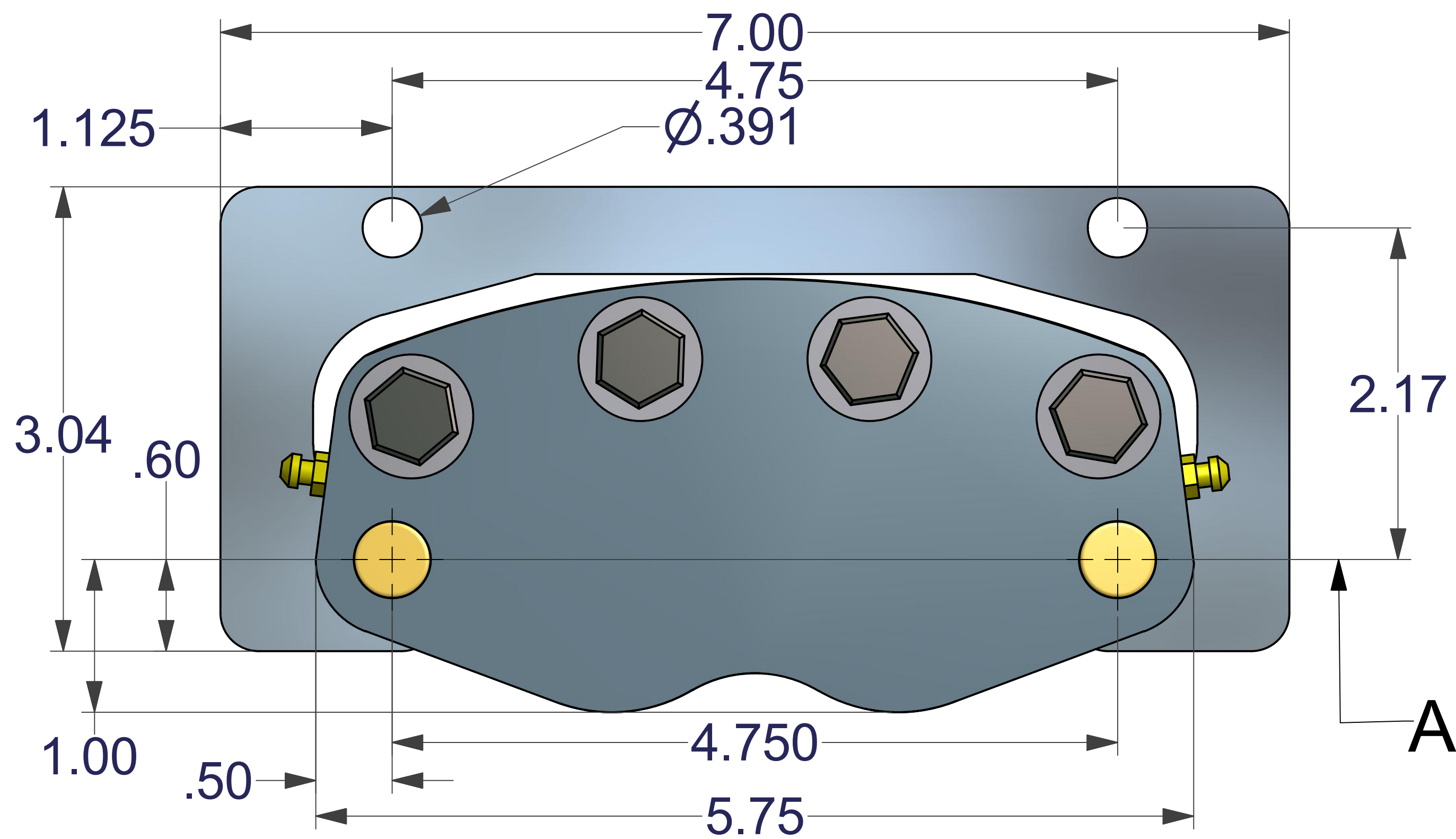


DISC. DIA.--DISC WIDTH--BRAKING RADIUS--'A' DIM. TO DISC C/L-- SPACER OPTION--'B' DIM.--'C' DIM.

6 5/16	.156	2.38	2.13	A	.26	3.02
8.0	.156	3.15	3.00	A	.26	3.02
10.0	.156	4.11	4.00	A	.26	3.02
12.0	.156	5.08	5.00	A	.26	3.02
16.0	.250	7.21	7.09	B	.35	3.11
	.375			L	.48	3.24
	.500			E	.60	3.36



SUFFIX "F" -- FLTG. BRACKET



MODEL	ASSY. NO.	DISC THK.
H200SA	4004-0000	.156
H200SB	4004-0001	.250
H200SAG	4004-0002	.156
H200SBG	4004-0003	.250
H200SE	4004-0004	.500
H200SEG	4004-0005	.500
H200SAF	4004-0056	.156
H200SBF	4004-0057	.250
H200SL	4004-0206	.375
H200SLG	4004-0177	.375
H200SLF	4004-0058	.375
H200SEF	4004-0059	.500
H200SAFG	4004-0096	.156
H200SBFG	4004-0097	.250
H200SLFG	4004-0098	.375
H200SEFG	4004-0099	.500

- * 1,500 PSI MAX. PRESSURE
- * (R) RETRACTABLE PISTONS (ON REQUEST)
- * (G) EPR SEALS FOR DOT3 FLUID
- * EXTRUDED ALUM. HSGS. HARDCOATED
- * 8.0 SQ. IN. TOTAL PAD AREA
- * 4.0 SQ. IN. PISTON AREA
- * 16 IN. MAX. DISC DIA.
- * ELECTRO NICKEL W/S.S. FASTENERS OPTIONAL

TORQUE RATINGS @ 1,000 PSI (INCH LBS.)
DISC DIA. DYNAMIC STATIC

6 5/16	6,854	3,427
8.0	9,072	4,536
10.0	11,836	5,918
12.0	14,630	7,315
16.0	20,764	10,382

UNLESS OTHERWISE SPECIFIED: DO NOT SCALE DRAWING REMOVE ALL BURRS TAP DEPTHS FULL THD. DRILL DEPTHS FULL DIA.	THIRD ANGLE PROJECTION	WC BRANHAM INC. RIVER FALLS, WI	
	DESIGNER WCB 03/02/11		TITLE H200S SERIES CALIPER BRAKES
	TOLERANCES 2 PLACE +/- .010 3 PLACE +/- .005	CHECKER	DATE
	THREADS EXTERNAL CLASS 2A INTERNAL CLASS 2B	SCALE	CLASS

E