

PART NUMBER	RATIO 3:2	ROTATION	A-BORE	B-BORE
4304-0568	ALL	RH	20mm	20mm
4304-0569		LH	20mm	20mm
4304-0890		RH	30mm	20mm
4304-0891		LH	30mm	20mm
4304-0884		RH	30mm	25mm
4304-0885		LH	30mm	25mm
4304-0886		RH	25mm	25mm
4304-0887		LH	25mm	25mm
4304-0896		RH	25mm	20mm
4304-0897		LH	25mm	20mm
4304-0898		RH	20mm	25mm
4304-0899		LH	20mm	25mm

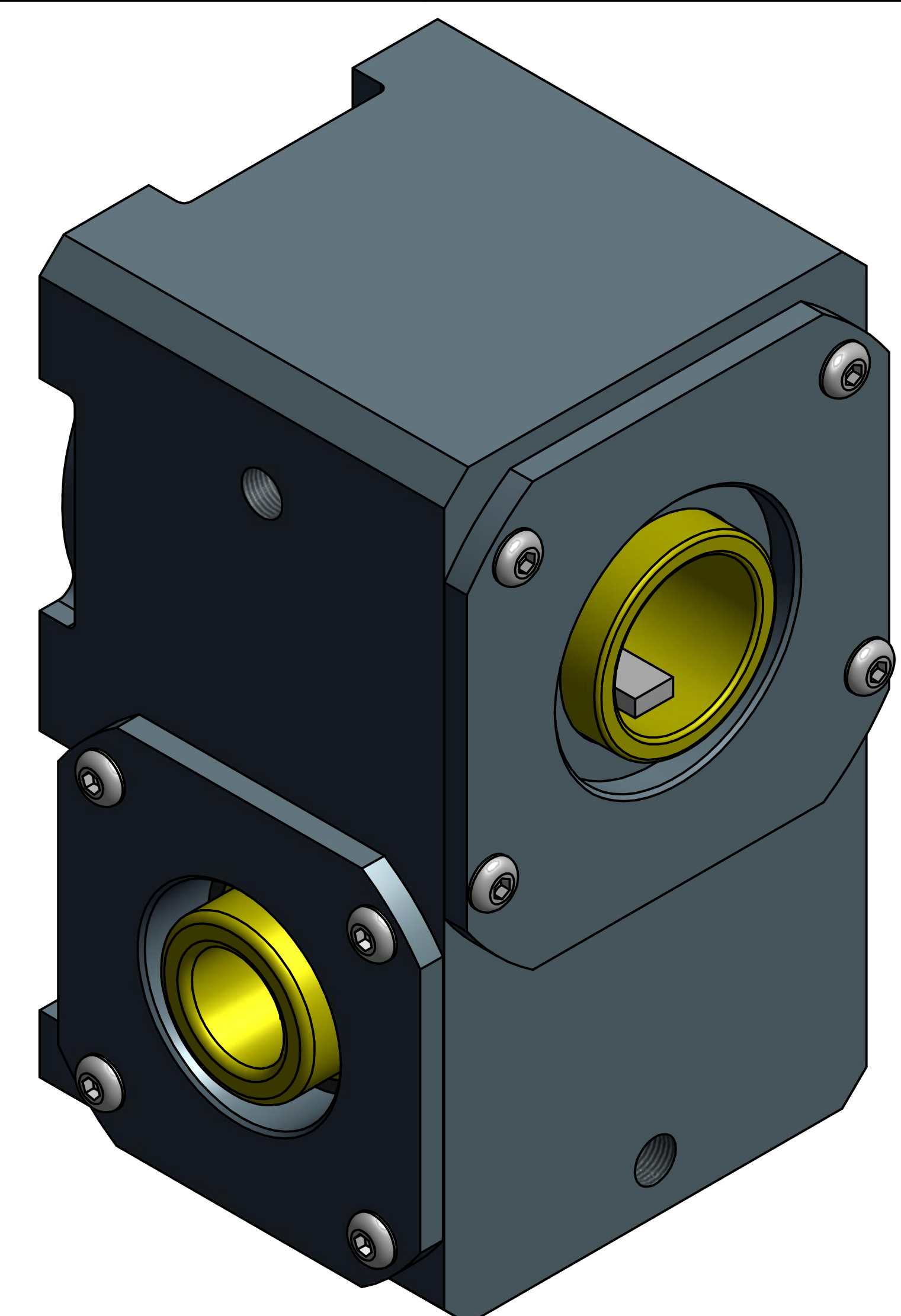
INPUT TORQUE = OUTPUT TORQUE / .78

RPM	OUTPUT TORQUE, IN. LBS.
33	310
50	268
100	214
200	170
300	149
400	104
500	96
1000	77
1200	59

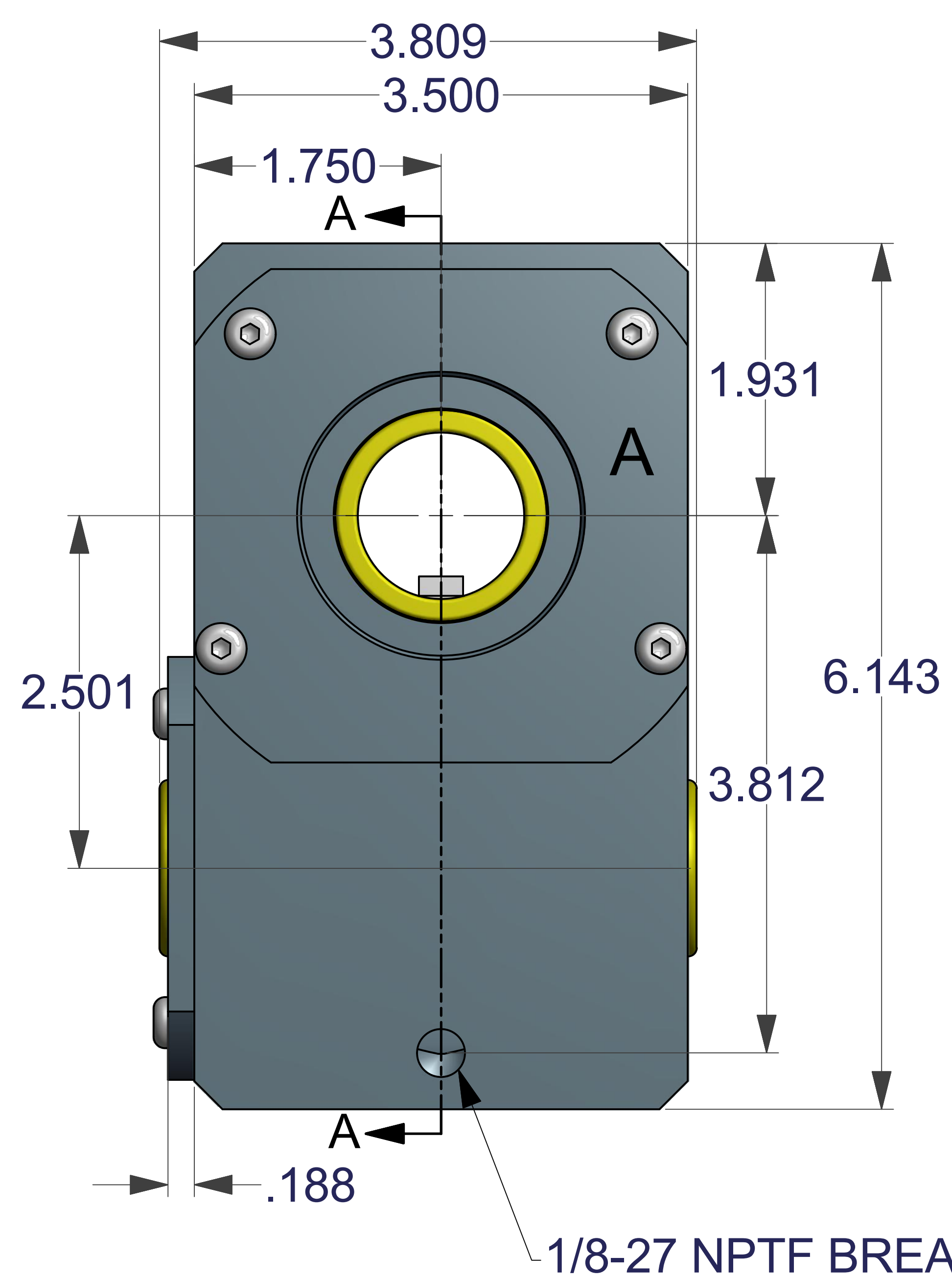
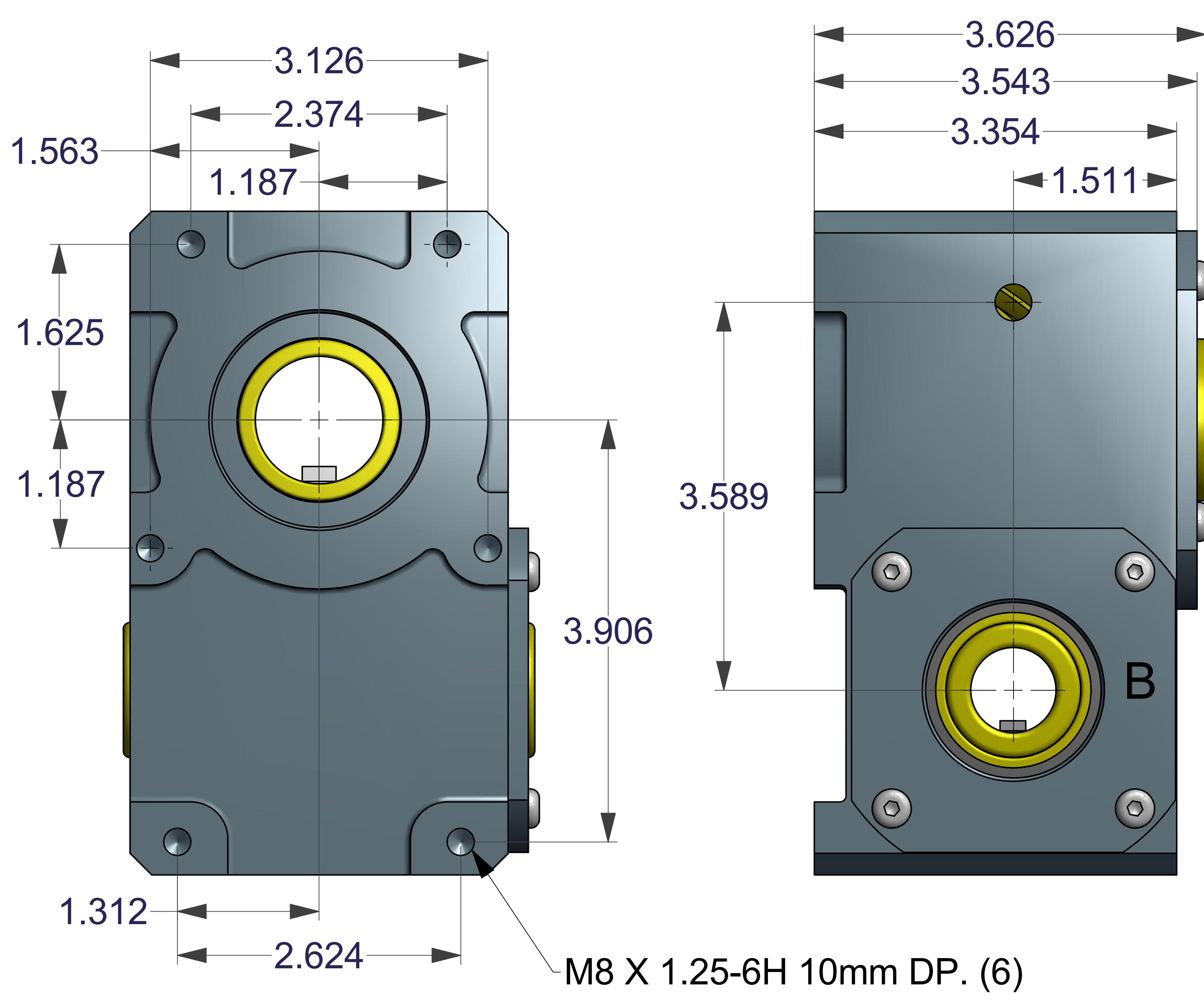
MAX. HAND TORQUE - 609 IN. LBS.

KEY SIZES: BORE -- WIDTH

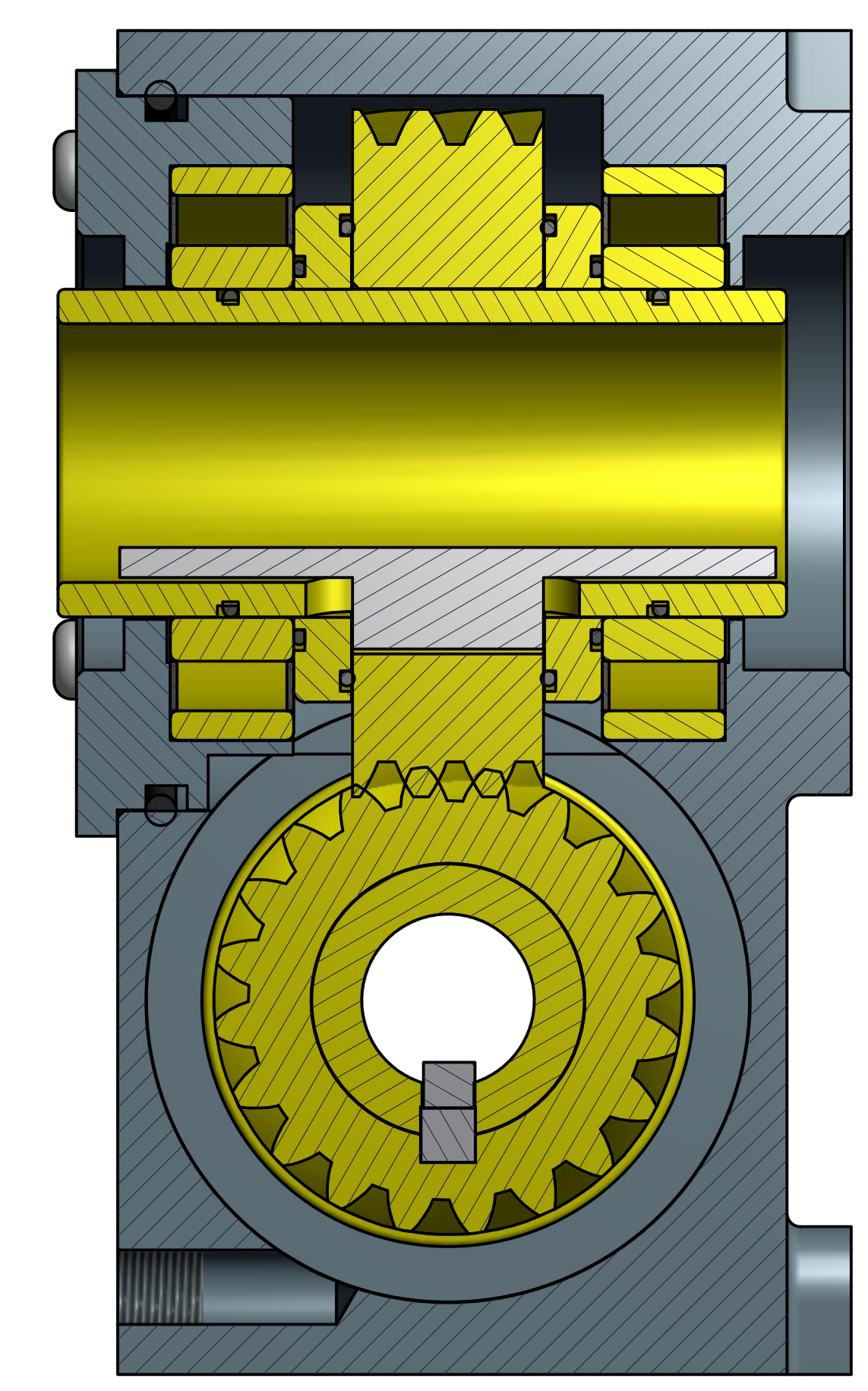
20mm	6mm
25mm	8mm
30mm	8mm



- * 8620 HEAT TREATED 30 TOOTH & 20 TOOTH GEARS
- * (2) DBL. SEALED R24 BALL BEARINGS & (2) DBL. SEALED R20 BALL BEARINGS
- * PREFILLED WITH MAGNALUBE 'G' GRADE 2
- * ALUMINUM CONSTRUCTION, ANODIZED



SECTION A-A
SCALE 1.5



1/8-27 NPTF BREATHER/FILL PORTS (2)

UNLESS OTHERWISE SPECIFIED: DO NOT SCALE DRAWING REMOVE ALL BURRS TAP DEPTHS FULL THD. DRILL DEPTHS FULL DIA.		THIRD ANGLE PROJECTION	W.C. BRANHAM INC. RIVER FALLS, WI.
TOLERANCES 2 PLACE +/- .010 3 PLACE +/- .005	DESIGNER WCB 01/04/11	DATE	
THREADS EXTERNAL CLASS 2A INTERNAL CLASS 2B	CHECKER	DATE	DRAWING NO.
SCALE	CLASS		REVISION

SIZE
E