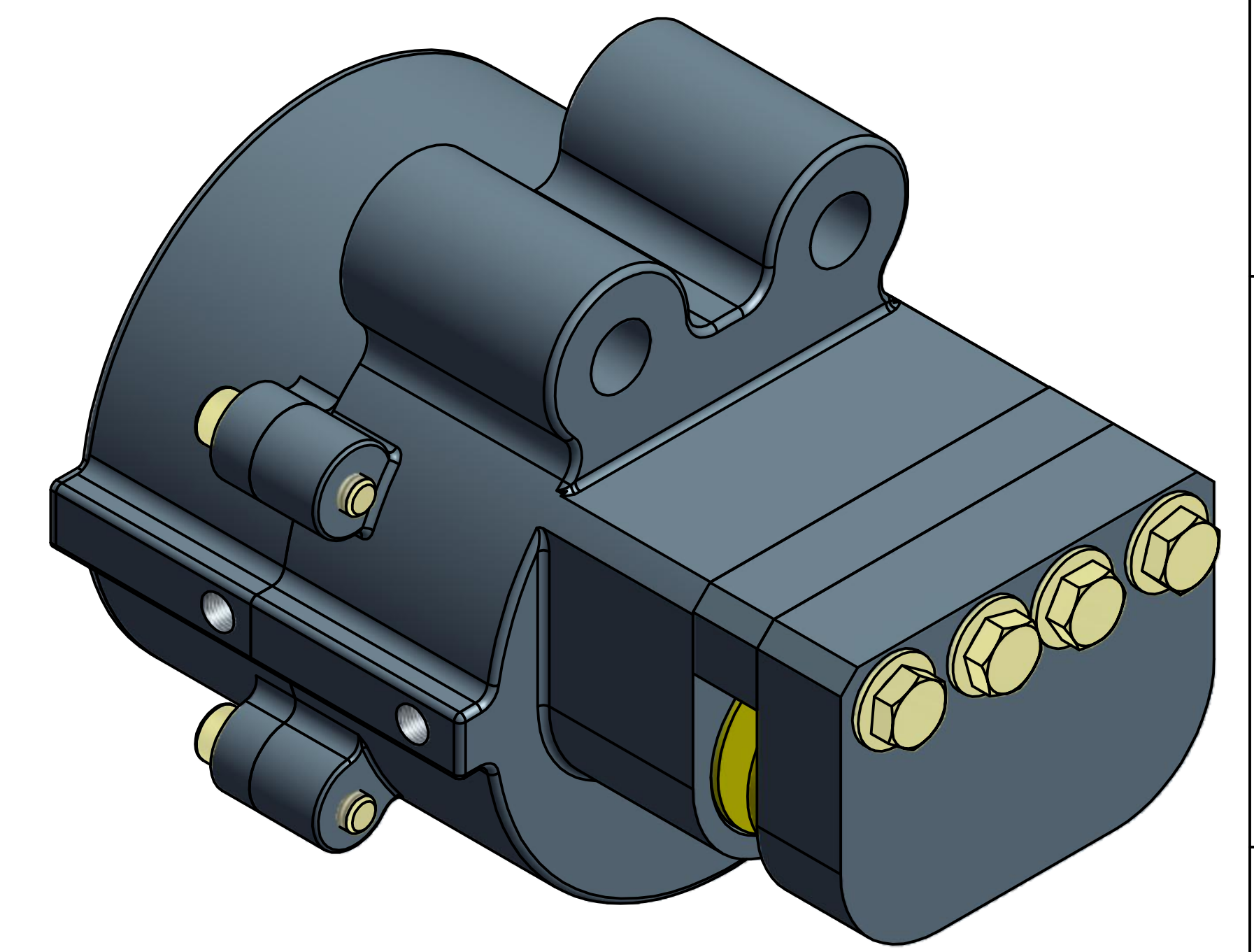
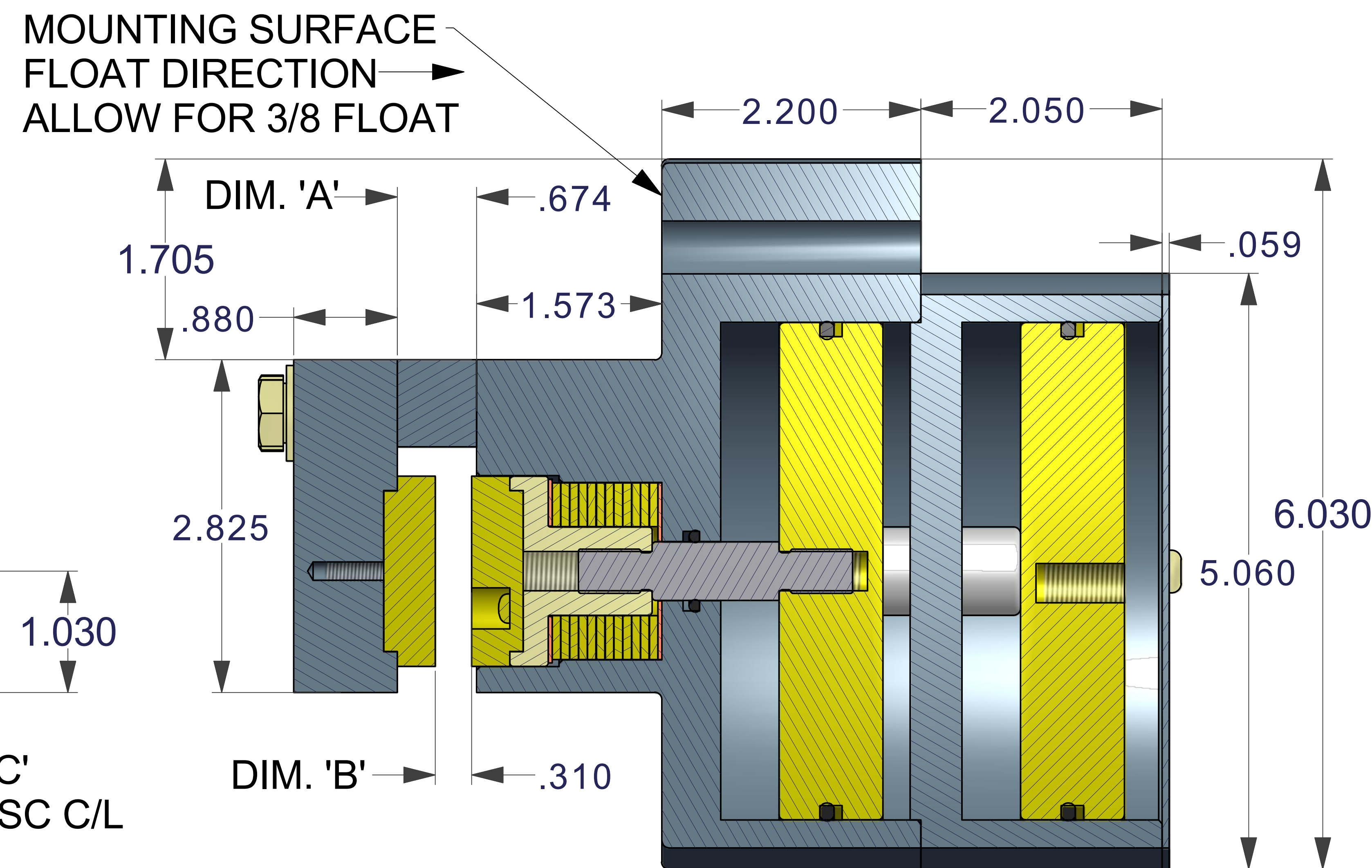
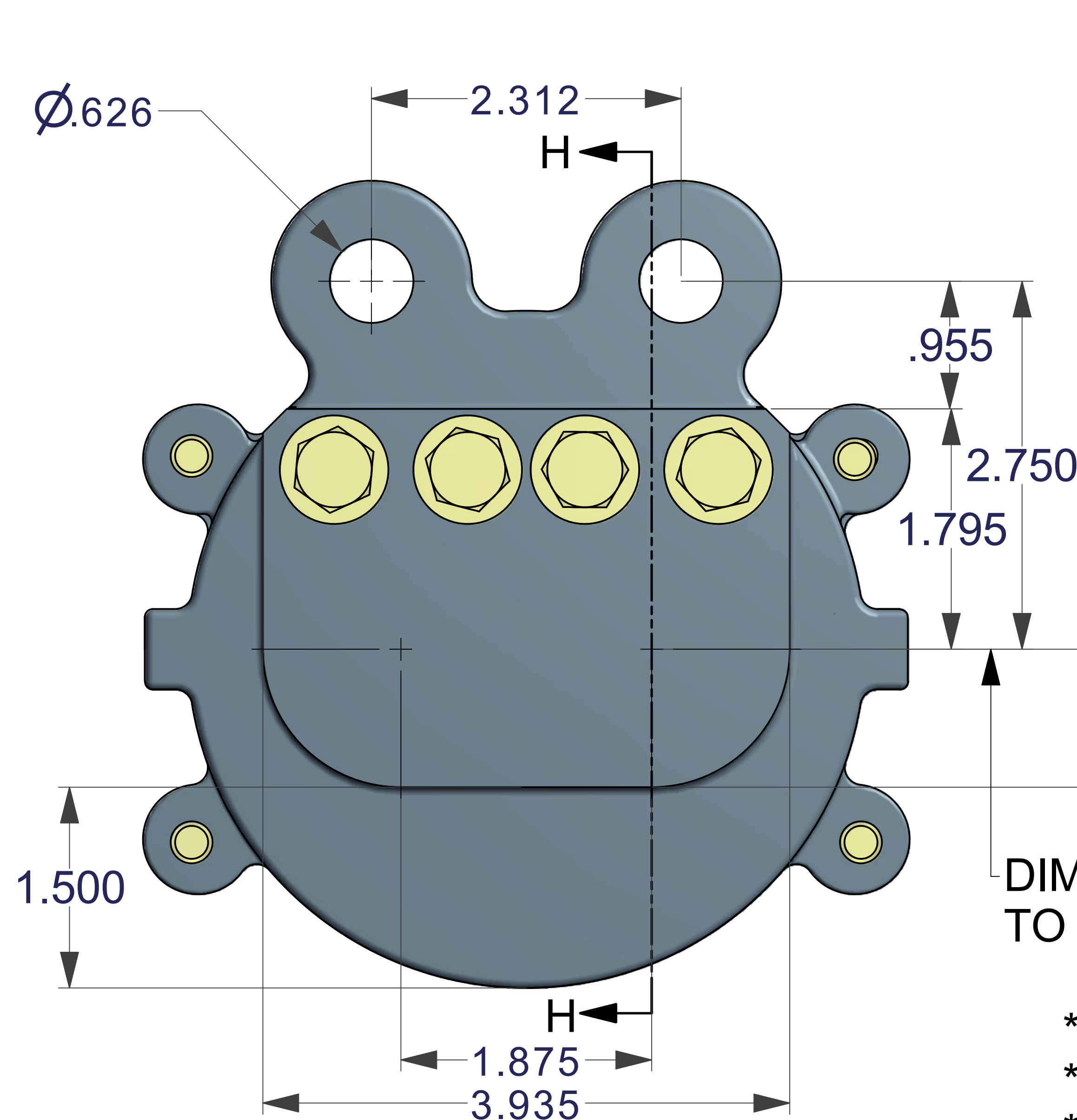


*PFS200 SERIES BRAKES ARE FOR EMERGENCY STOP & HOLD APPLICATIONS ONLY.
 * SPACERS ARE AVAILABLE FOR OTHER DISC THICKNESSES.
 * TORQUE, IN. LBS. = TANGENTIAL FORCE, LBS. X BRAKING RADIUS, INCHES
 * BRAKING RADIUS, INCHES = SQ. ROOT (DIM. 'C' SQUARED + .8789)
 * PORTING -- (3) 1/8-27 NPTF. ALL PORTS INTERCONNECTED.

TOTAL PAD WEAR, INCHES	TANGENTIAL FORCE, LBS.	DISC DIA.	DIM. 'C'	BRAKING RADIUS
0	929	8.0	3.070	3.210
.06	796	10.0	4.070	4.177
.12	663	12.0	5.070	5.156
.18	530	16.0	7.070	7.132
.24	397	18.0	8.070	8.124
.30	264	20.0	9.070	9.118
.36	131	30.0	14.070	14.101
.42	0			



DISC THK.	DIM. 'A'	DIM. 'B'
5/32	.580	.216
3/16	.612	.247
1/4	.674	.310
3/8	.799	.435
1/2	.924	.560
3/4	1.174	.810
1.0	1.424	1.06
1.125	1.549	1.185



SECTION H-H
SCALE 1.5

- * 85 PSI RELEASE PRESSURE
- * CAST ALUM. CONSTRUCTION
- * HARDCOATED HOUSINGS
- * 8.19 SQ. INCHES TOTAL FRICTION PAD AREA
- * UNLIMITED DISC DIAMETERS
- * REPLACEABLE FRICTION PADS
- * 2,065 LBS. OF CLAMPING FORCE
- * .45 COFF. OF FRICTION
- * DUAL BELLEVILLE DISC SPRING STACKS. 12 EACH
- * NON-ASBESTOS FRICTION MATERIAL
- * BUNA N SEALS. VITON OPTIONAL
- * 1.52 CUBIC INCHES WEARABLE VOLUME

PART NO.	MODELS	DISC THK.
4005-0030	PFS200SAUL	5/32
4005-0031	PFS 200SBUL	1/4
4005-0032	PFS200SLUL	3/8
4005-0033	PFS200SEUL	1/2
4005-0034	PFS200SJUL	5/8
4005-0035	PFS200STUL	3/4
4005-0036	PFS200SOUL	1.0
4005-0037	PFS200 SQUL	1.125

UNLESS OTHERWISE SPECIFIED: DO NOT SCALE DRAWING REMOVE ALL BURRS TAP DEPTHS FULL THD. DRILL DEPTHS FULL DIA.		THIRD ANGLE PROJECTION		W.C. BRANHAM INC. RIVER FALLS, WI.	
TOLERANCES 2 PLACE +/- .010 3 PLACE +/- .005		DESIGNER WCB	DATE 12/26/10	TITLE PFS200S UL SERIES	
THREADS EXTERNAL CLASS 2A INTERNAL CLASS 2B		CHECKER	DATE	DRAWING NO.	REVISION
SCALE		CLASS		SIZE E	