

PART NUMBER	TYPE	A-BORE	B-BORE
4304-0770	R.H.	1 1/4	1 1/4
4304-0771	L.H.	1 1/4	1 1/4
4304-0772	R.H.	1 1/4	1.0
4304-0773	L.H.	1 1/4	1.0
4304-0774	R.H.	1 1/4	3/4
4304-0775	L.H.	1 1/4	3/4
4304-0776	R.H.	1 1/4	5/8
4304-0777	L.H.	1 1/4	5/8
4304-0778	R.H.	1.0	1.0
4304-0779	L.H.	1.0	1.0
4304-0780	R.H.	1.0	3/4
4304-0781	L.H.	1.0	3/4
4304-0782	R.H.	1.0	5/8
4304-0783	L.H.	1.0	5/8
4304-0784	R.H.	3/4	3/4
4304-0785	L.H.	3/4	3/4
4304-0786	R.H.	3/4	5/8
4304-0787	L.H.	3/4	5/8
4304-0788	R.H.	5/8	5/8
4304-0789	L.H.	5/8	5/8

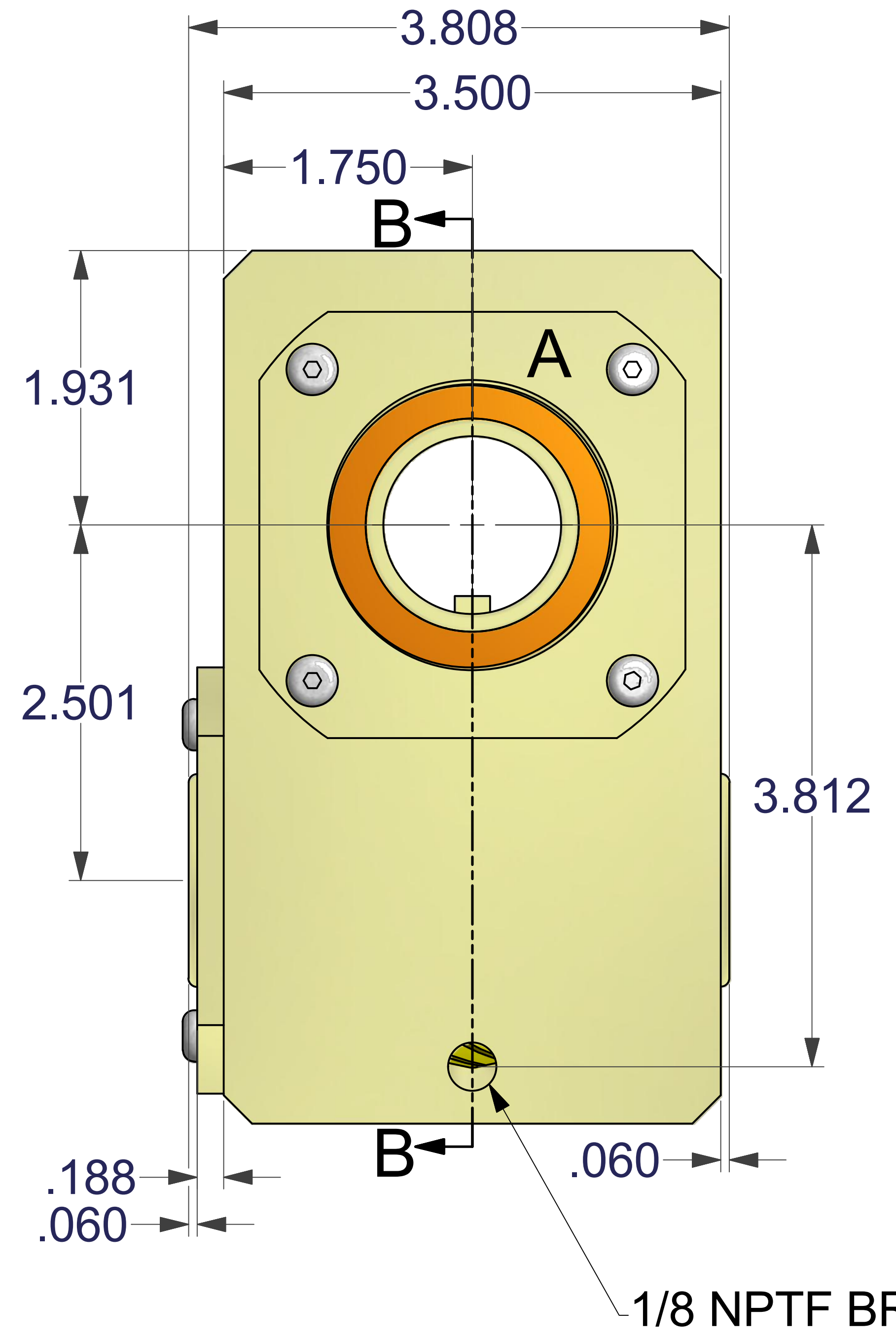
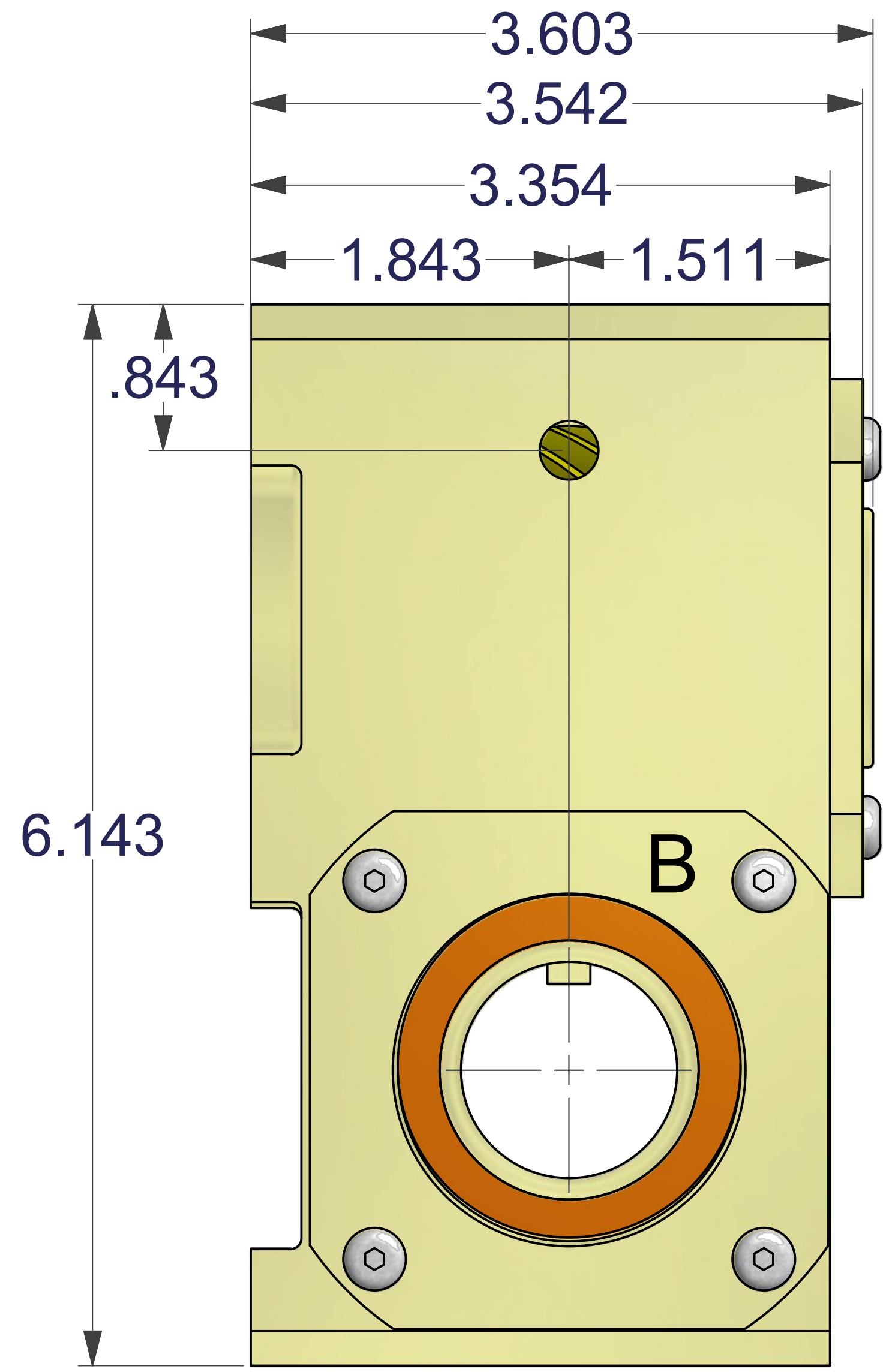
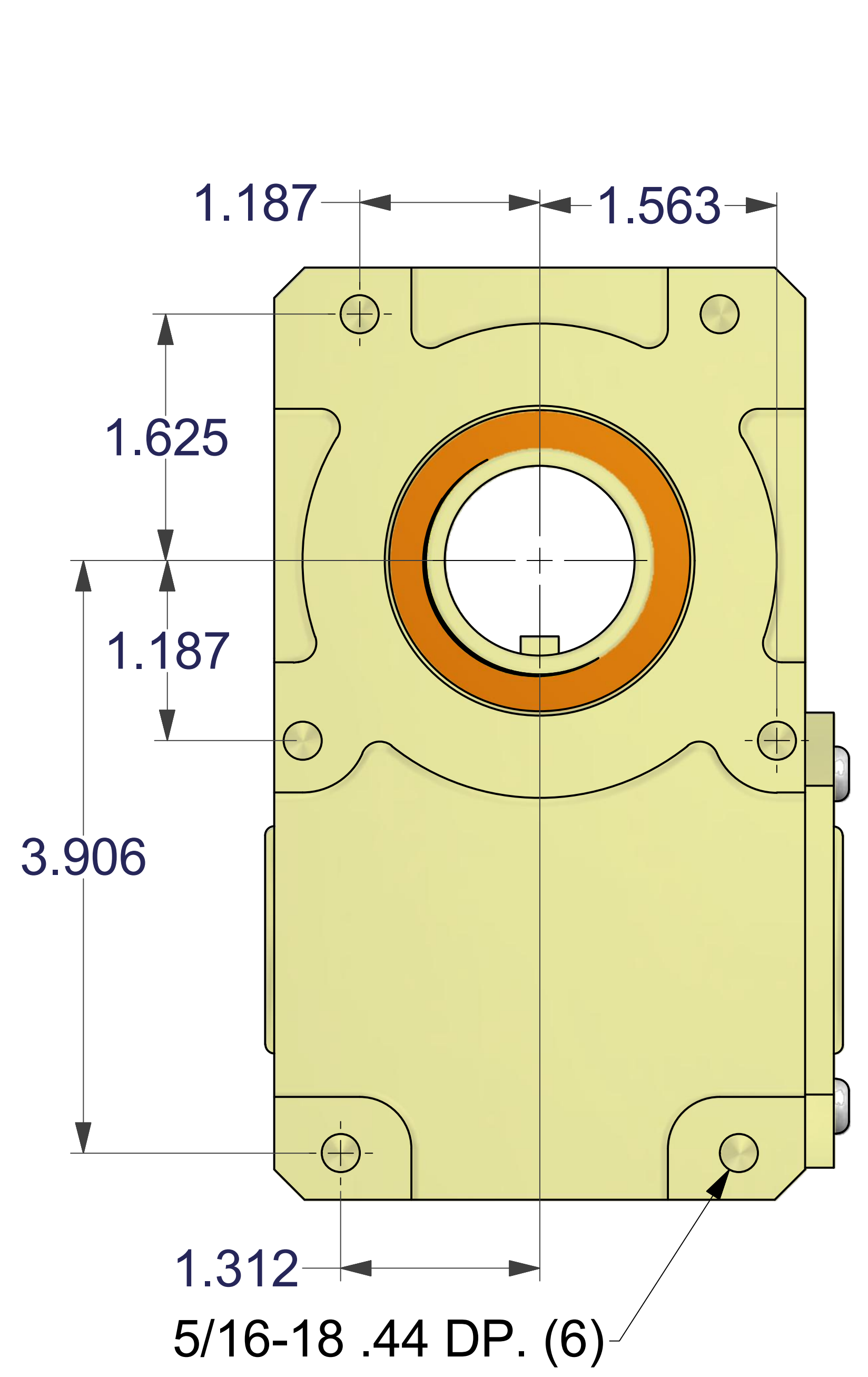
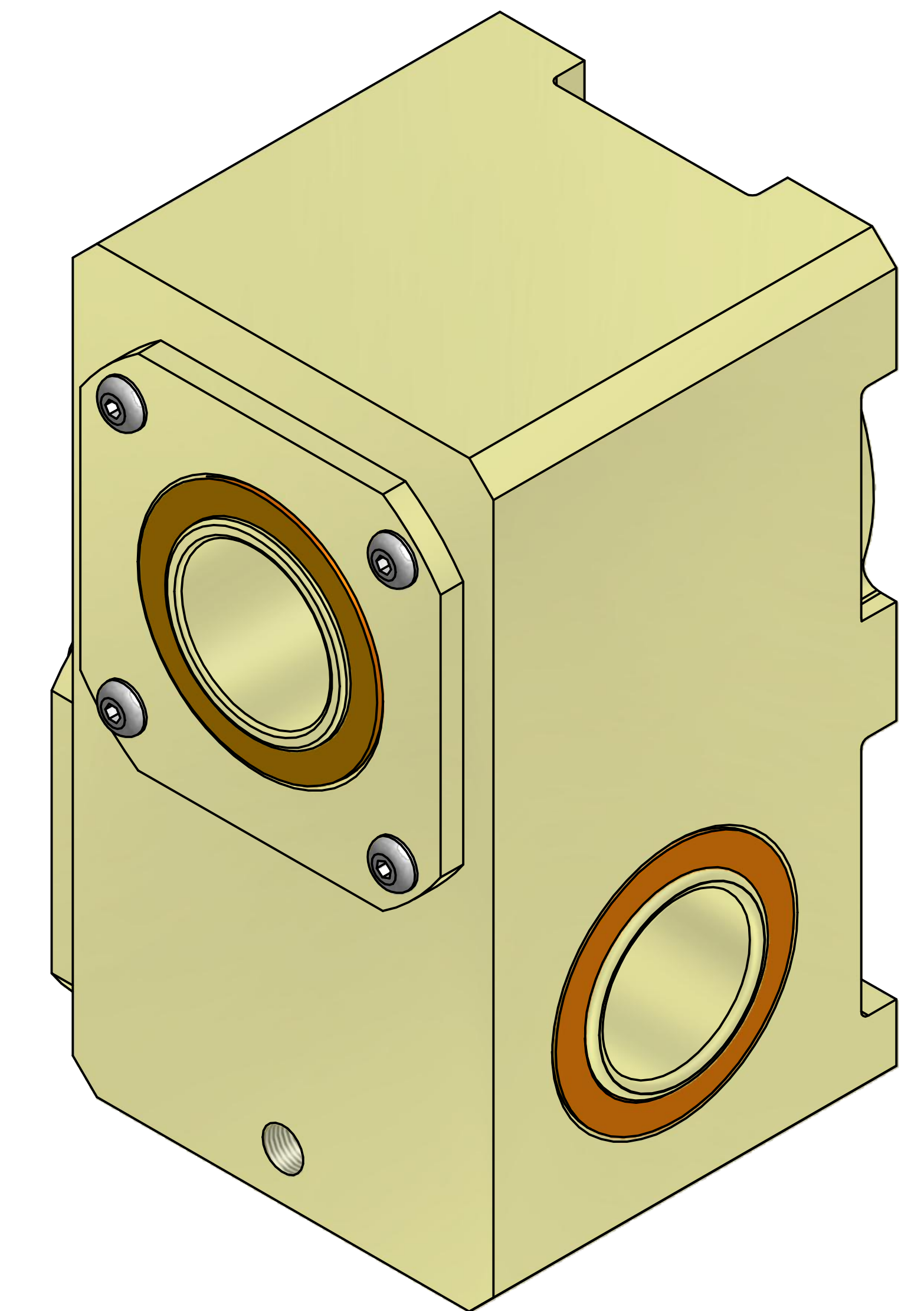
INPUT TORQUE = OUTPUT TORQUE / 0.6, IN. LBS.

RPM	OUTPUT TORQUE, IN. LBS.
33	358
50	312
100	248
200	198
300	172
400	122
500	111
1,000	90
1,200	85

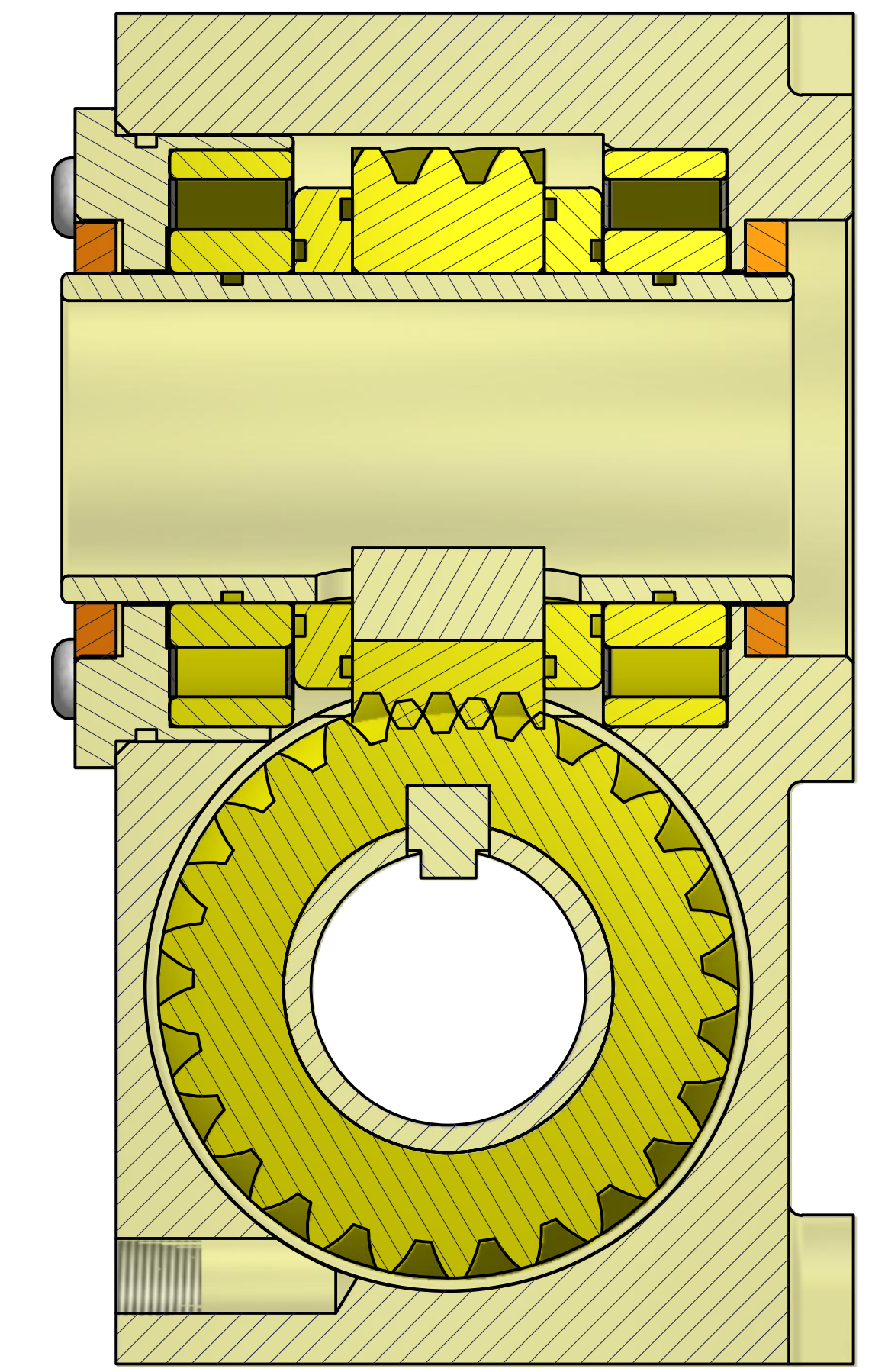
MAX. HAND TORQUE = 609 IN. LBS.

KEY SIZES: 5/8 -- 3/16
3/4 -- 3/16
1.0 -- 1/4
1 1/4 -- 1/4
1 1/2 -- 3/8

- * 8620 HEAT TREATED GEARS
- * (4) DBL. SEALED STAINLESS R24 BALL BEARINGS
- * 304 STAINLESS HOUSING, CAPS, SHAFTS & KEYS
- * STAINLESS FASTENERS
- * (4) SPRING LOADED SHAFT SEALS



SECTION B-B
SCALE 1.5



CRL -- CONTINUOUS RECIRCULATING LUBRICANT
 PREFILLED WITH LUBRIPLATE 1500 GRADE 00

IAS CRL FLATBASE 1:1 RATIO
 304 STAINLESS SERIES

<small>UNLESS OTHERWISE SPECIFIED: DO NOT SCALE DRAWING REMOVE ALL BURRS TAP DEPTHS FULL THD. DRILL DEPTHS FULL DIA.</small>	<small>THIRD ANGLE PROJECTION</small> 	<small>DESIGNER</small> WCB	<small>DATE</small> 07/15/10	<small>TITLE</small> IAS CRL FLATBASE 1:1 RATIO 304 STAINLESS SERIES
	<small>TOLERANCES</small> 2 PLACE +/- .010 3 PLACE +/- .005	<small>CHECKER</small> 	<small>SCALE</small> 	<small>REVISION</small>
	<small>THREADS</small> EXTERNAL CLASS 2A INTERNAL CLASS 2B	<small>CLASS</small> 	<small>DRAWING NO.</small> 	<small>REVISION</small>
	<small>WC BRANHAM INC. RIVER FALLS, WI</small>			