

INPUT TORQUE = OUTPUT TORQUE / .6

RPM	OUTPUT TORQUE, INCH LBS.
33	177
50	154
100	122
200	98
300	85
400	60
500	55
1000	44
1200	42

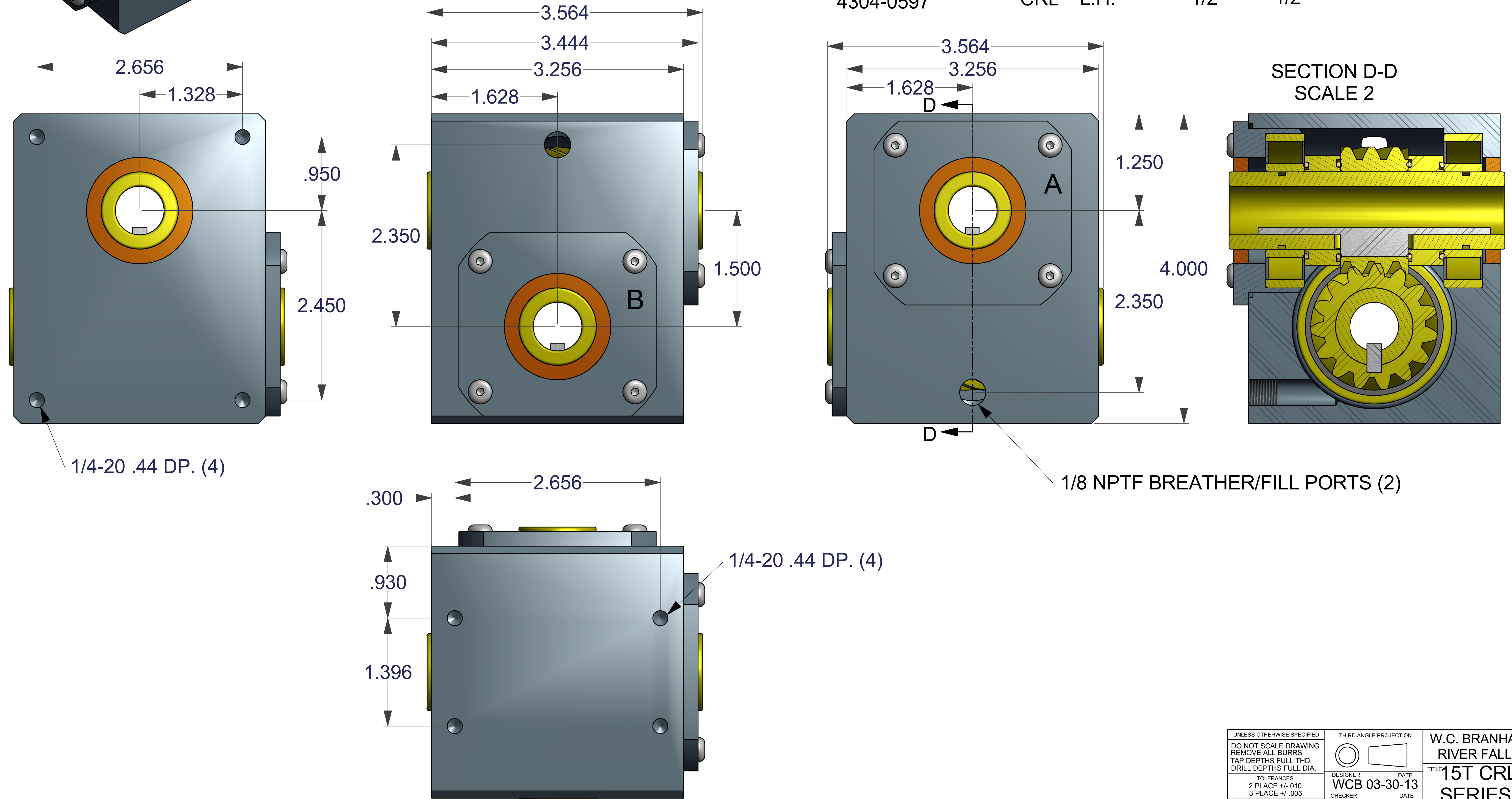
MAX. HAND TORQUE -- 302 IN. LBS.

KEY SIZES
 1/2 BORE - 1/8
 5/8 BORE - 3/16
 3/4 BORE - 3/16
 1.0 BORE - 1/4

- * PREFILLED WITH LUBRIPLATE 1500 GRADE 00
- * 8620 HEAT TREATED 15 TOOTH GEARS
- * (4) R16 DBL. SEALED BALL BEARINGS
- * ALUM. HOUSING & CAPS, BLACK ANODIZED
- * (4) SHAFT SEALS
- * ELECTRO NICKEL PLATING & STAINLESS
- * FASTENERS AVAILABLE
- * STAINLESS HOUSING, CAPS & BEARINGS AVAILABLE
- * METRIC BORE SIZES & METRIC THREADS AVAILABLE

PART NO.	RATIO	TYPE	ROTATION	A-BORE	B-BORE
4304-0588	1:1 ALL	CRL	R.H.	5/8	5/8
4304-0589		CRL	L.H.	5/8	5/8
4304-0590		CRL	R.H.	3/4	5/8
4304-0591		CRL	L.H.	3/4	5/8
4304-0592		CRL	R.H.	3/4	3/4
4304-0593		CRL	L.H.	3/4	3/4
4304-0594		CRL	R.H.	1/2	5/8
4304-0595		CRL	L.H.	1/2	5/8
4304-0596		CRL	R.H.	1/2	1/2
4304-0597		CRL	L.H.	1/2	1/2

"CRL" = CONTINUOUS RECURCULATING LUBRICANT



UNLESS OTHERWISE SPECIFIED: DO NOT SCALE DRAWING REMOVE ALL BURRS TAP DEPTHS FULL THD. DRILL DEPTHS FULL DIA.		THIRD ANGLE PROJECTION		W.C. BRANHAM INC. RIVER FALLS, WI.	
TOLERANCES 2 PLACE +/- .010 3 PLACE +/- .005		DESIGNER WCB 03-30-13	DATE	TITLE 15T CRL SERIES	
THREADS EXTERNAL CLASS 2A INTERNAL CLASS 2B		CHECKER	DATE	DRAWING NO.	REVISION
SCALE		CLASS		SIZE E	